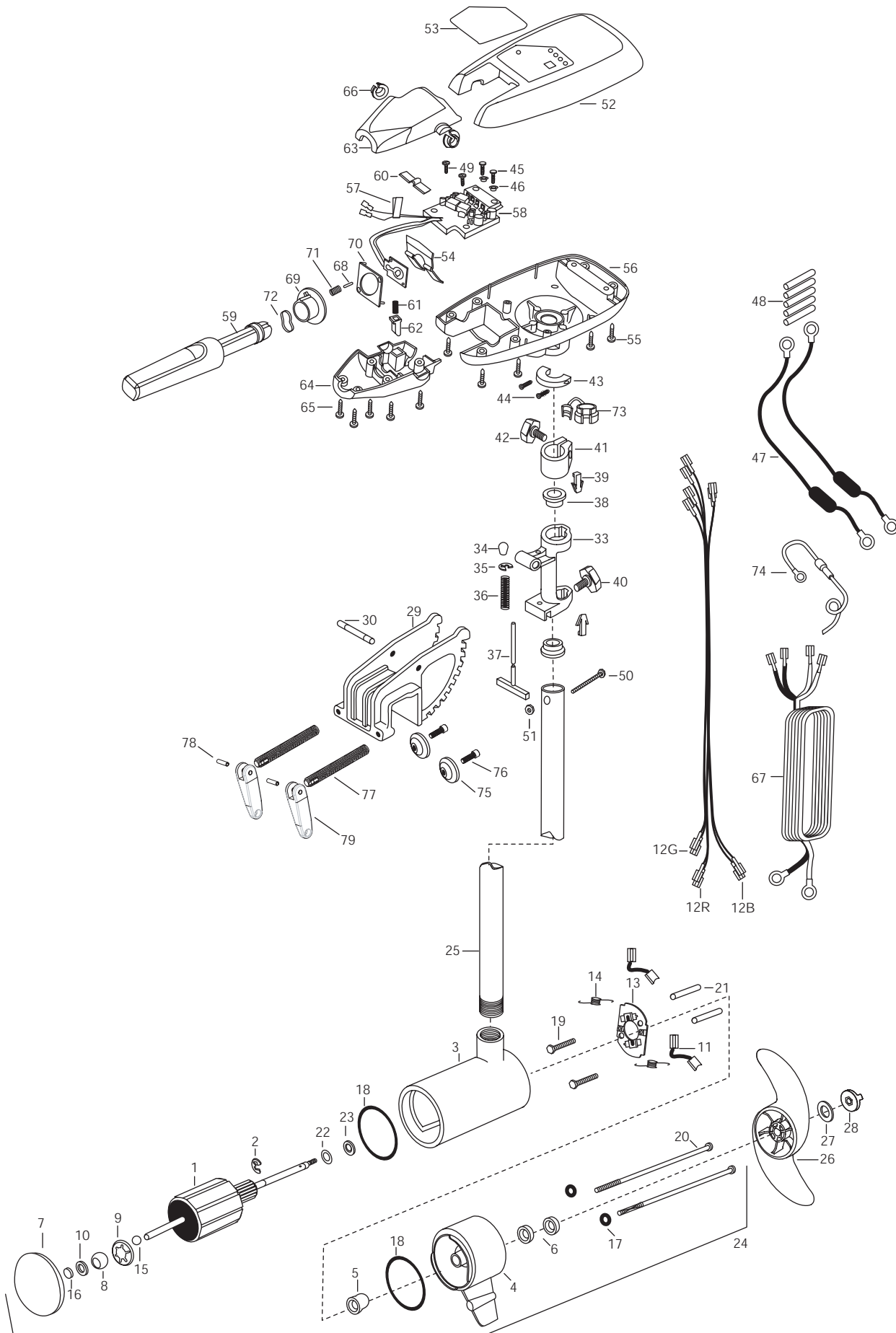


RT101/S  
101 lbs Thrust  
36 Volt 37 Amps  
42" Shaft



1	2-100-110	ARMATURE ASSEMBLY 36V VARS SW 101#	26	2331130	PROPELLER (W.WDG) MAX101	54	2302743	SPRING-DETENT HANDLE-TILT
2	788-040	RETAINING RING	27	2091701	WASHER- PROP LARGE MAX	55	2303412	SCREW-6-20 X 5/8 SELF TAP [6.EA]
3	431-310	CENTER HOUSING ASSEMBLY.4.0 TXT WHITE	28	2198401	ANODE- ZINC 4.0 LWR UNIT	56	2062596	CONTROL BOX,SW, WHITE .725 BORE
4	2-300-340	BRUSH END HOUSING ASSEMBLY 4. SW TXT	■	2991830	BRACKET & HINGE ASSEMBLY (SW)	57	2305810	TAG-AIR SWITCH LEADS
5	144-017	BEARING -FLANGE (SERVICE ONLY)	29	2031934	BRACKET DIE CAST SW WHITE 10P	58	2264013	CTRL BOARD ASSEMBLY-RT 101
6	880-025	**SEAL [2.EA]	30	2010512	PIN-DRIVE LOK 3/8X2-1/2 SS	59	2990915	HANDLE ASSEMBLY W/O U-JOINT
7	2-400-341	PLAIN END HOUSING ASSEMBLY	33	2031856	HINGE-MACH SS RT WHITE	60	2302742	SPRING-DETENT (OFF) SS
8	144-021	BEARING -SPHERICAL	34	2010100	KNOB-TILT	61	2302745	SPRING-RELEASE BUTTON SS
9	784-025	BEARING RETAINER	35	2333001	E-RING- SS	62	2303720	RELEASE BUTTON-HANDLE
10	991-040	WASHER FELT	36	2332700	SPRING- (T-BAR) SS	63	2060411	HANDLE (TOP HALF) MAXIMIZE
11	188-094	BRUSH W/TERMINAL [2.EA]	37	2033601	T-BAR (E-COAT)	64	2060415	HANDLE (LOWER HALF)
12B	640-017	LEADWIRE- BLACK	38	2037301	BUSHING-HINGE [2.EA]	65	2303412	SCREW-6-20 X 5/8 SELF TAP [5.EA]
12R	640-121	LEADWIRE- RED	39	2062800	TENSION BLOCK- "SNAP IN" [2.EA]	66	2060005	BEARING-HANDLE PIVOT [2.EA]
12G	640-303	LEADWIRE- GREEN	40	2011386	SCREW-TENSION/NEW KNOB SS	67	2090600	LEADWIRE (10 GA) RINGS
13	738-004	BRUSH PLATE -4" TERMINAL	41	2061520	COLLAR-DEPTH	68	2302600	PIN-ACTUATOR
14	975-041	SPRING -TORSION [2.EA]	42	2011366	SCREW-COLLAR/NW KNOB SS	69	2302850	ACTUATOR-CAM
15	116-025	BALL -STEEL	43	2061517	COLLAR-CTRL BOX SW WHITE	70	2302851	ACTUATOR-FWD/REV
16	303-043	THRUST DISC- METAL	44	2223430	SCREW #8-3/4 PPH TYPE 25 SS [2.EA]	71	2302740	SPRING- (ACTUATOR)
17	701-009	**O-RING -THRU BOLT [2.EA]	45	2301310	SCREW-8-18 X 1/2 SS [2.EA]	72	2302741	SPRING-CAM (ZNC PLTD STEEL)
18	701-043	**O-RING [2.EA]	46	2301710	WASHER-INSUL. (TRANSF.BAR) [2.EA]	73	2052900	STRAIN RELIEF-C.CORD/SP.C
19	830-027	SCREW -SELF THREADED 10-32 X 2"[2.EA]	47	2998200	CIRCUIT BRKR ASSEMBLY,36V- [2.EA]	74	2060310	CONNECT'GROUND WIRE-FUSED
20	830-096	THRU BOLT 12-24 X 11.56" SS [2.EA]	48	2305400	SHRINK TUBE-3/8 OD X 1-1/ [5.EA]	75	2331700	WASHER, CLAMP SCREW SS [2EA.]
21	973-025	SPACER -BRUSH PLATE [2.EA]	49	2372100	SCREW-8-18 X 5/8 THD* SS [2.EA]	76	2263452	SCREW 1/4-20 X 3/4SS [2EA.]
22	990-051	WASHER-THRUST, STEEL	50	2263406	SCREW-#10-24 X 2 (SS) PPH	77	2051301	CLAMP SCREW [2EA.]
23	990-052	WASHER- NYLATRON	51	2333101	NUT-HEX 10-24 UNC-2B NYLOCK	78	2052625	PIN-HANDLE
24	2317053	MOTOR ASSEMBLY 36V VARS SW -INCL. 1-23	52	2300219	COVER- CONTROL BOX (SW) RT WHITE	79	2050925	HANDLE-SCREW
25	2032032	TUBE (COMPOSITE) 42" WHITE	53	2095683	DECAL-COVER RT101/B/S	■	2991301	CLAMP SCREW-HANDLE ASSEMBLY

(includes items 77, 78, 79)

