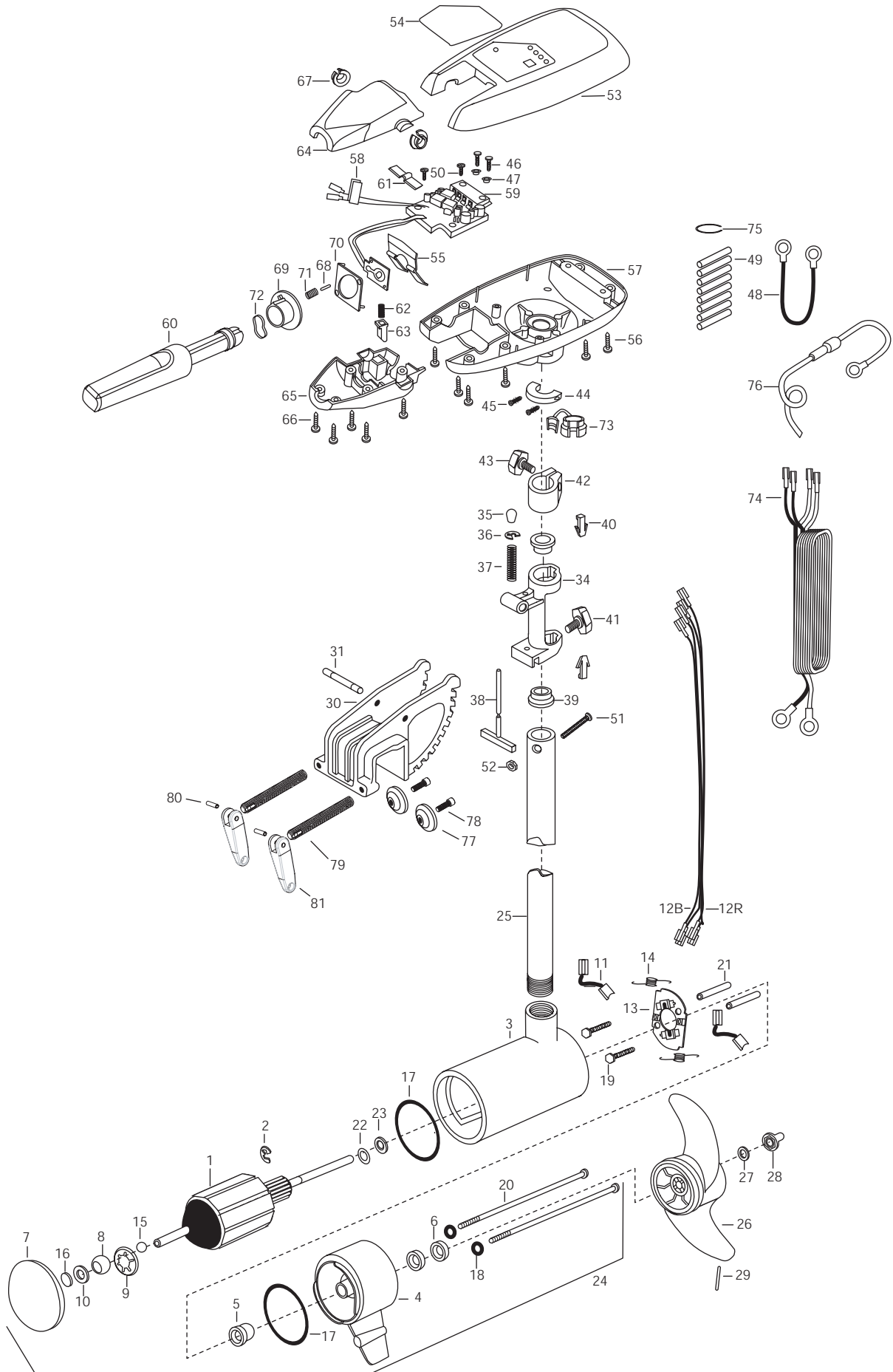


RT74/S  
74 LBS. THRUST  
24 VOLT 45 AMPS  
42" SHAFT



1	2-100-103	ARMATURE ASSEMBLY 24V 4.0 74#	42	2061520	COLLAR-DEPTH
2	788-040	RETAINING RING	43	2011366	SCREW-COLLAR/NEW KNOB SS
3	2-200-397	CENTER-HOUSING ASSEMBLY 4.0 SW WHITE	44	2061517	COLLAR-CTRL BOX
4	2-300-340	BRUSH END HOUSING ASSEMBLY SW	45	2223430	SCREW #8X3/4 PPH TYPE 25 SS [2.EA]
5	144-017	BEARING - FLANGE	46	2301310	SCREW-8-18 X 1/2 SS [2.EA]
6	880-025	**SEAL [2.EA]	47	2301710	WASHER-INSUL. (TRANSF.BAR) [2.EA]
7	2-400-341	PLAIN END HOUSING ASSEMBLY 4.0 SW	48	2340610	CONNECTOR CABLE- 12"
8	144-021	BEARING - SPHERICAL	49	2305400	SHRINK TUBE-3/8 OD [8.EA]
9	784-025	BEARING RETAINER	50	2372100	SCREW-#8-18 X 5/8 THD [2.EA]
10	991-040	WASHER - FELT	51	2263406	SCREW-#10-24 X 2 SS PPH
11	188-094	BRUSH 4" W/TERMINAL [2.EA]	52	2333101	NUT-HEX #10-24 NYL SS UNC 2B
12B	640-015	LEADWIRE BLACK 10 AWG 55	53	2300219	COVER- CONTROL BOX RIPIDE WHITE
12R	640-119	LEADWIRE RED 10 AWG 56-1/2	54	2095617	DECAL-COVER (RT74/S)
13	738-004	BRUSH PLATE-4" TERMINAL	55	2302743	SPRING-DETENT HANDLE-TILT
14	975-041	SPRING - TORSION [2.EA]	56	2303412	SCREW-6-20 X 5/8 SELF TAP [6.EA]
15	116-025	BALL - STEEL	57	2062597	CONTROL BOX,SW, WHITE .875 BORE
16	303-043	THRUST DISC - METAL	58	2305810	TAG-AIR SWITCH LEADS
17	**701-043	O-RING THRU BOLT [2.EA]	59	2344007	CONTROL BOARD ASSEMBLY SW
18	**701-009	O-RING [2.EA]	60	2990915	HANDLE ASSEMBLY W/O U-JOINT
19	830-027	SCREW - SELF-THREAD 10-32X2 [2.EA]	61	2302742	SPRING-DETENT (OFF) SS
20	830-094	THRU BOLT 12-24 x 10.31 [2.EA]	62	2302745	SPRING-RELEASE BUTTON SS
21	973-025	SPACER - BRUSHPLATE [2.EA]	63	2303720	RELEASE BUTTON-HANDLE
22	990-051	WASHER - STEEL THRUST	64	2060411	HANDLE (TOP HALF) MAXIMIZER
23	990-052	WASHER - NYLATRON	65	2060415	HANDLE (LOWER HALF)
24	2317042	MTR ASSEMBLY 24V 4 VARS SW 74/W	66	2303412	SCREW-6-20 X 5/8 SELF TAP [5.EA]
25	2032032	TUBE (COMPOSITE) 42" WHITE	67	2060005	BEARING-HANDLE PIVOT
■	1378129	PROPELLER KIT	68	2302600	PIN-ACTUATOR
26	2331120	PROPELER- WEEDLESS WEDGE	69	2302850	ACTUATOR-CAM
27	2091701	WASHER-PROP (LARGE)	70	2302851	ACTUATOR-FWD/REV
28	2198401	ANODE- ZINC 4.0 LWR UNIT	71	2302740	SPRING- (ACTUATOR)
29	2092600	PIN-DRIVE SS	72	2302741	SPRING-CAM ZNC PLTD STEEL
■	2991830	BRACKET & HINGE ASSEMBLY SW WHITE	73	2332900	STRAIN RELIEF-C.CORD/C.
30	2031934	BRACKET- DIE CAST SW WHITE 10P	74	2330600	LEADWIRE (10 GA-4) RINGS
31	2010512	PIN-DRIVE LOK 3/8X2-1/2 SS	75	2303001	RING-PIG LOXIT HILL #2
34	2031856	HINGE-MACH. RT WHITE SS	76	2060310	CONNECT GROUND WIRE-FUSED
35	2010100	KNOB-TILT	77	2331700	WASHER, CLAMP SCREW SS [2EA.]
36	2333001	E-RING- SS	78	2263452	SCREW 1/4-20 X 3/4 SHCS SS [2EA.]
37	2332700	SPRING- T-BAR	79	2051301	CLAMP SCREW [2EA.]
38	2033601	T-BAR E-COAT	80	2052625	PIN-HANDLE
39	2037301	BUSHING-HINGE [2.EA]	81	2080925	HANDLE-SCREW
40	2062800	TENSION BLOCK- "SNAP IN" [2.EA]	■	2991301	CLAMP SCREW-HANDLE ASSEMBLY
41	2011386	SCREW-TENSION/NEW KNOB			(includes items 79, 80, 81)

BLACK

CONTROL BOARD

POT BOARD

RED

BLACK

RED

CONNECTING WIRE

