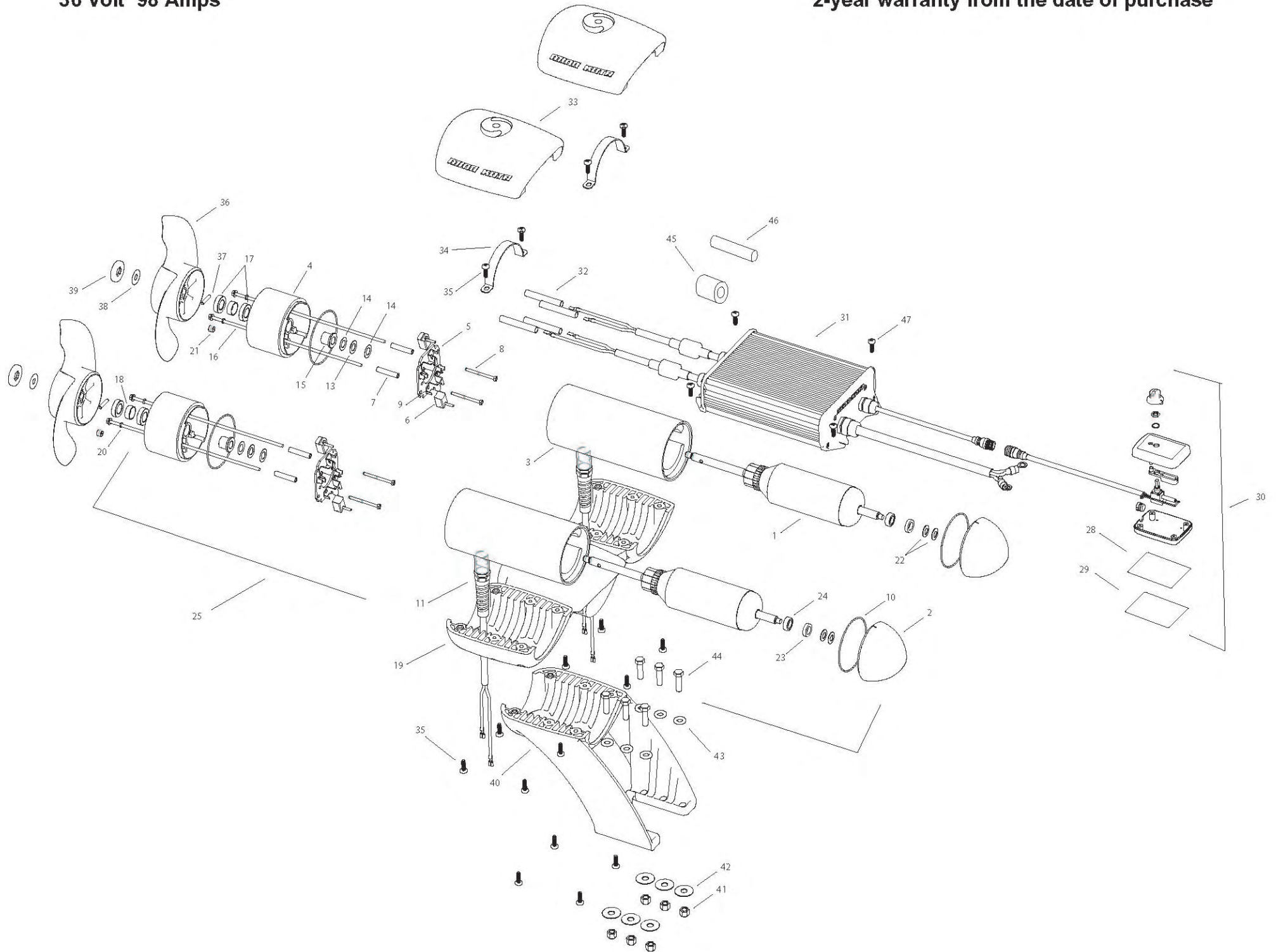


**EM 202**  
**36 Volt 98 Amps**

**for use with "AI" serial numbers**  
**2-year warranty from the date of purchase**



1	2-100-235	ARMATURE 36V 4.0 [1 PER MOTOR]
2	421-276	PLAIN END [1 PER MOTOR]
3	2-200-109	CENTER HOUSING ASSEMBLY [1 PER MOTOR]
4	2-300-149	BRUSH END HOUSING (CONTAINS 4-9 ) [1 PER MOTOR]
5	2-600-234	BRUSH PLATE ASSEMBLY (CONTAINS 5, 6, 9) [1 PER MOTOR]
6	188-094	BRUSH [2 PER MOTOR]
7	973-025	SPACER - BRUSH PLATE [2 PER MOTOR]
8	830-027	SCREW #10-32 X 2 SLF THREAD [2 PER MOTOR]
9	975-041	BRUSH SPRING [2 PER MOTOR]
10	701-043	O-RING [2 PER MOTOR]
11	2772917	LEADWIRE ASSEMBLY [1 PER MOTOR]
13	990-051	WASHER STEEL [1 PER MOTOR]
14	990-052	WASHER NYLATRON [1 PER MOTOR]
15	144-017	FLANGE BEARING [1 PER MOTOR]
16	830-096	THRU-BOLT 12-24 X 10.31 [2 PER MOTOR]
17	880-025	SEAL [2 PER MOTOR]
18	725-095	PAPER TUBE [1 PER MOTOR]
19	2381945	BRACKET, DUAL MOUNT
20	701-009	O-RING THRUBOLT [2 PER MOTOR]
21	836-001	ALUMINUM PLUG [1 PER MOTOR]
22	992-010	SPRING WASHER [2 PER MOTOR]
23	990-045	THRUST SPACER [1 PER MOTOR]
24	140-010	BALL BEARING [1 PER MOTOR]
25	2396250	MOTOR ASSY 24V 4.0 80# [2 EA]
28	9950953	VELCRO 1.5 X 2.0 LOOP
29	9950950	VELCRO 1.5 X 2.0 HOOK
30	2990241	HAND CONTROLER
31	2990238	CONTROL MODULE
32	2385401	SHRINK TUBE [4 EA]
33	2380210	TOP CAP [2 EA]
34	2383810	STRAP, EM [2 EA]
35	2383418	SCREW 1/4-20 SELF TAPPING [18 EA]
■	1378132	PROP KIT [1 PER MOTOR]
36	2331160	PROPELLER [1 PER MOTOR]
37	2262658	DRIVE PIN [1 PER MOTOR]
38	2091701	WASHER, PROP LARGE [1 PER MOTOR]
39	2093101	NUT, PROP [1 PER MOTOR]
40	2381940	LOWER BRACKET
41	2383122	NUT 3/8-16 NYLOCK [6EA]
42	2381726	WASHER FENDER 3/8 X 1 1/4 OD [3 EA]
43	2381728	WASHER 3/8 [3 EA]
44	2383422	SCREW 3/8 X 1 1/4 [6EA]
45	2307310	FERRITE BEAD [2 EA] (EUROPEAN MOTORS ONLY)
46	2075401	HEATSHRINK [2 EA] (EUROPEAN MOTORS ONLY)
47	2373427	SCREW #12 X 5/8 [4 EA]
■	2994856	BAG ASSY (CONTAINS 38-41,32,28,29,47,TIE WRAPS)

2889460 seal & oring kit

\* This item is part of an assembly. This item cannot be sold separately due to machining and /or assembly that is required.

36V

