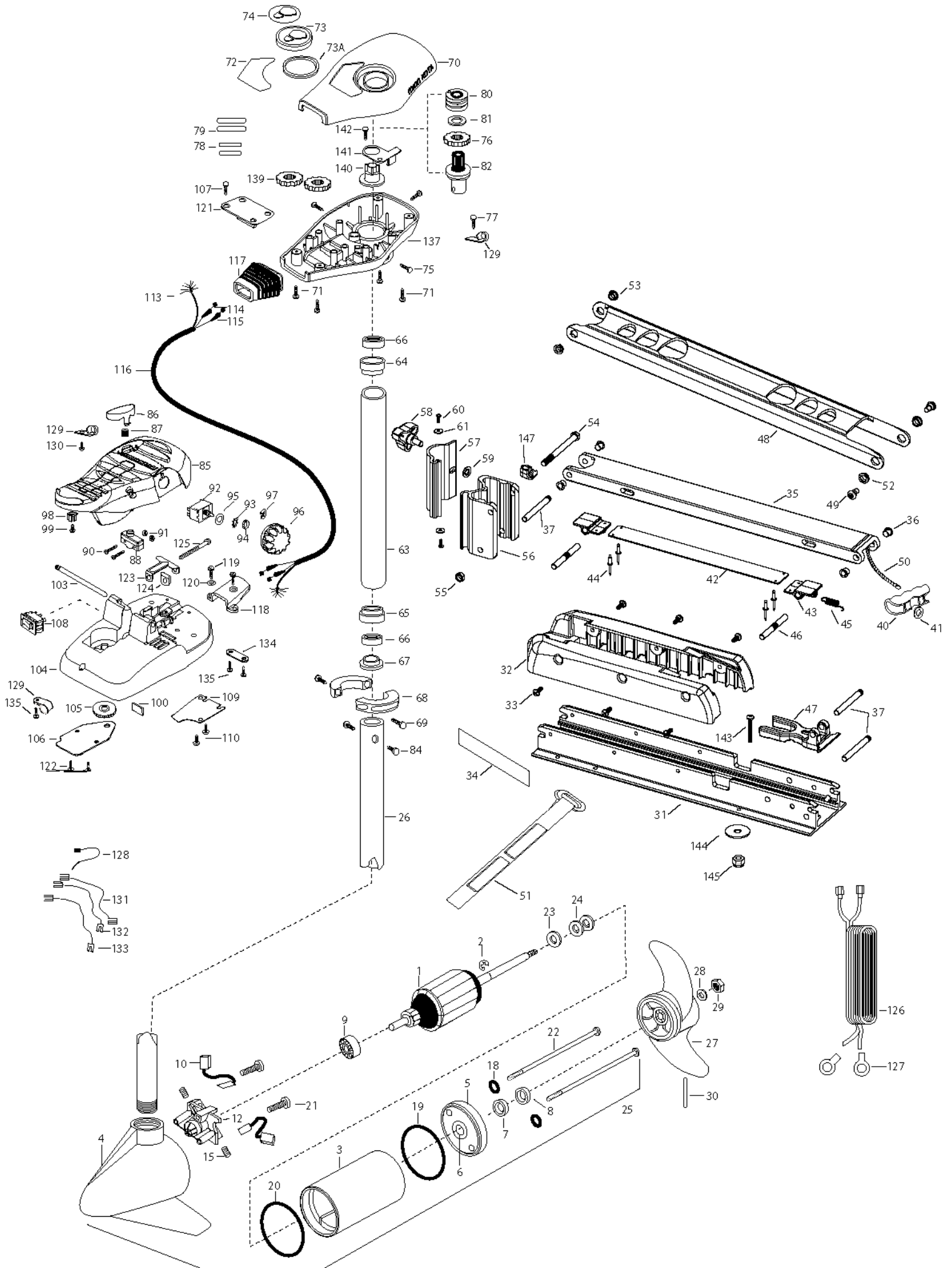


EDGE 70
70 LBS THRUST
24 VOLT 42 AMPS
45"/52" SHAFT

for use with "J" serial numbers
2-year warranty from the date of sale



| | | | | | | | | |
|----|-----------|--------------------------------------|-----|---------|-----------------------------------|------|---------|-------------------------------------|
| 1 | 2-100-119 | ARM ASSEMBLY 24V 3.625 | 49 | 2263510 | BOLT-SHOULDER, SS [2 EA.] | 100 | 2266413 | TENSION SCREW PLATE FT PEDL |
| 2 | 788-015 | RETAINING RING | 50 | 2251601 | ROPE- 44.5" (45" MODEL) | 103 | 2260511 | PIN-PIVOT A/T FT PDL |
| 3 | 2-200-005 | HOUSING ASSEMBLY CENTER 3.625 TXT | | 2251603 | ROPE-48" (52" MODEL) | 104 | 2992104 | FT PEDAL BASE/PIN ASSEMBLY SONAR |
| 4 | 2-300-042 | HOUSING-ASSEMBLY BRUSH END 3.625 45" | 51 | 2263805 | VELCRO STRAP | 105 | 2262301 | PULLEY- FOOT PEDAL |
| | 2-300-139 | HOUSING-ASSEMBLY BRUSH END 3.625 52" | 52 | 2267302 | BUSHING-LOWER 7/16" ID, SS | 106 | 2266401 | COVER-FOOTLE STAMPING |
| 5 | 2-400-101 | PLAIN END HOUSING ASSEMBLY | 53 | 2267303 | BUSHING-UPPER 3/8" ID, SS | 107 | 2223430 | SCREW-#8X 3/4 PPH TYPE 25 SS [4.EA] |
| 6 | 144-049 | BEARING- FLANGE [SERVICE ONLY] | 54 | 2263505 | BOLT 3/8-16 X 4.25" | 108 | 2254031 | SWITCH-MOM/OFF/COM |
| 7 | 880-003 | SEAL | 55 | 2263114 | NUT-NYLOCK JAM 3/8-16 | 109 | 2266412 | SWITCH PLATE, FT PEDAL |
| 8 | 880-006 | SEAL WITH SHIELD | 56 | 2261872 | HINGE BASE, FW | 110 | 2332103 | SCREW-6-20 X 3/8 THD [2.EA] |
| 9 | 140-010 | BEARING -BALL | 57 | 2261877 | HINGE DOOR, FW | 113 | 2261208 | WIRE HARNESS, A/T FT. PED |
| 10 | 188-037 | BRUSH ASSEMBLY [2.EA] | 58 | 2260905 | HANDLE-SOFT GRIP, L&D | 114 | 2267505 | CABLE ASSEMBLY-RIGHT 5' |
| 12 | 738-036 | BRUSH PLATE W/HOLDER 3.625 | 59 | 2261728 | WASHER-RETAINING 3/8" | 115 | 2267515 | CABLE ASSEMBLY-LEFT 5' |
| 15 | 975-040 | SPRING- TORSION [2.EA] | 60 | 2053415 | SCREW #8-32 X 3/8" TRI [2 EA.] | 116 | 2265430 | CABLE JACKET 5' |
| 18 | 701-008 | O-RING [2. EA] | 61 | 2261732 | WASHER #8, NYLON [2 EA.] | 117 | 2265110 | BOOT-CONTROL BOX |
| 19 | 337-036 | GASKET | ■ | 2992012 | TUBE W/BEARING RACE ASSEMBLY 21" | 118 | 2265115 | BOOT-FOOT PEDAL BASE |
| 20 | 701-081 | O-RING | | 2992016 | TUBE W/BEARING RACE ASSEMBLY 24" | 119 | 2372100 | SCREW-8-18 X 5/8 THD [2.EA] |
| 21 | 830-007 | SCREW- SELF-THREAD 8-32X1.7 [2.EA] | 63 | 2272069 | TUBE OUTER-21" 4 HOLES | 120 | 2261714 | WASHER-MAXXUM FT PDL [2.EA] |
| 22 | 830-008 | THRU BOLT 10-32 X 9.205 [2.EA] | | 2272067 | TUBE OUTER -24" 4 HOLES | 121 | 2261901 | BRACKET-CONDUIT AT/MAX |
| 23 | 990-067 | WASHER- STEEL THRUST | 64 | 2266260 | BEARING RACE | 122 | 2223430 | SCREW-8-18 X 3/4" [4.EA] |
| 24 | 990-070 | WASHER- NYLATRON [2.EA] | 65 | 2266220 | BEARING RACE-STEEL | 123 | 2263210 | BRACKET- CONDUIT ADJUSTMENT |
| 25 | 2096035 | MTR ASSEMBLY 24V 3.625 5SPD 45" | 66 | 2266000 | BEARING BALL-STEEL [2.EA] | 124 | 2263104 | NYLOCK KEEPER |
| | 2096039 | MTR ASSEMBLY 24V 3.625 5SPD 52" | 67 | 2266115 | BEARING CONE | 125 | 2263466 | SCREW-1/4-20 X 2 STL PPH |
| 26 | 2032061 | TUBE (COMP)W/CSK HOLE 45" | 68 | 2261622 | COLLAR HALF-ALUMINUM- [2.EA] | 126 | 2261235 | LEADWIRE-BATTERY |
| | 2032067 | TUBE (COMP)W/CSK HOLE 52" | 69 | 2263453 | SCREW-1/4X20 X 1" SHCS SS [2. A] | 127 | 2020700 | TERMINAL RING, 3/8" [2.EA] |
| ■ | 1378131 | PROPELLER KIT | 70 | 2260286 | COVER-CTR BOX EDGE/FC BLK | 128 | 2256300 | TIE WRAP-5.5" BLACK |
| 27 | 2091160 | PROPELLER W/WEDGE 2 | 71 | 2372100 | SCREW-8-18 X 5/8 THD [4.EA] | 129 | 2263201 | CLAMP WIRE HARNESS MICRO [3 EA.] |
| 28 | 2151726 | WASHER- 5/16 SS | 72 | 2265674 | DECAL-COVER EDGE 70/FC | 130 | 2332103 | SCREW-6-20 X 3/8 THD |
| 29 | 2053101 | NUT-PROP NYLOC | 73 | 2260150 | POINTER DISC TRNSLCNT RED | 131 | 2260301 | CONNECTING WIRE -SWITCH |
| 30 | 2092600 | PIN-DRIVE SS | 73A | 2261733 | WASHER-FOAM, INDICATOR | 132 | 2260312 | WIRE,BLK W/WHT- 19 1/2 |
| 31 | 2266507 | BOWPLATE, FW, LONG, 52" | 74 | 2265800 | DECAL-INDICATOR | 133 | 2260322 | WIRE,BLK W/BLUE -12" |
| | 2266502 | BOWPLATE, FW, STD, 45" | 75 | 2053414 | SCREW-8-32 X 1/2 TRI LOBE [3. EA] | 134 | 2263205 | LEADWIRE CLAMP |
| 32 | 2263905 | MOTOR REST, BLK. | 76 | 2267800 | GEAR-INDICATOR | 135 | 9953104 | SCREW-8 X 1/2" SS |
| 33 | 2303430 | SCREW 1/4-20 X 5/8 [6 EA.] | 77 | 2372100 | SCREW-8-18 X 5/8 SS | 137 | 2262535 | CONTROL BOX-PLASTIC |
| 34 | 2265667 | MOTOR REST DECAL, FW [2 EA.] | 78 | 2375400 | SHRINK TUBE-1/4OD X 1-3/4 [2. EA] | 139 | 2267800 | GEAR-INDICATOR [2.EA] |
| ■ | 2991704 | BOWMOUNT FW ASSEMBLY, STD | 79 | 2355410 | SHRINK TUBE-3/8 OD X 2 [2. EA] | 140 | 2262220 | INDICATOR-DRIVE |
| | 2991706 | BOWMOUNT FW ASSEMBLY, LONG | 80 | 2232360 | PULLEY-CABLE DRUM | 141 | 2261905 | BRACKET/INDICATOR |
| 35 | 2264346 | LOWER ARM, FW, LONG | 81 | 2261730 | WASHER-NYLON A/T | 142 | 2372100 | SCREW-8-18 X 5/8 (SS) |
| | 2264341 | LOWER ARM, FW, STD. | 82 | 2996246 | BEARING RACE/ PINION ASSEMBLY | ■ | 2994838 | BAG ASSEMBLY |
| 36 | 2266002 | NYLINER 3/8" SHAFT [4 EA.] | 84 | 2263410 | SCREW-8-32 X 5/16 ZN PL [2.EA] | *143 | 2263462 | SCREW 1/4-20X2 SS [6.EA] |
| 37 | 2260503 | PIVOT PIN [3 EA.] | 85 | 2994496 | FOOT PEDAL/PLUG ASSEMBLY AT | *144 | 2261713 | WASHER-1/4 FLAT 18-18 [6.EA] |
| 40 | 2150400 | PULL-GRIP | 86 | 2283700 | PUSH-BUTTON FOOT PEDAL W/MAGNET | *145 | 2263103 | NUT- 1/4-20 NYLOC-JAM [6.EA] |
| 41 | 2151700 | WASHER-EYE SHAFT .562 OD | 87 | 2302732 | SPRING-LOWER PEDAL SS | 147 | 2262310 | GUIDE ROPE |
| ■ | 2993812 | LATCH STRAP ASSEMBLY, LONG, 52" | 88 | 2264040 | SWITCH MOMENTARY | | | |
| | 2993811 | LATCH STRAP ASSEMBLY, STD, 45" | 90 | 2262114 | SCREW-MOUNTING/SWITCH [2.EA] | | | |
| 42 | 2263607 | LATCH STRAP, LONG, 50" | 91 | 2233100 | NUT-SWITCH MOUNT [2.EA] | | | |
| | 2263605 | LATCH STRAP, STD, 45" | 92 | 2264026 | SWITCH-S SPEED | | | |
| 43 | 2261902 | BRACKET-LATCH [2 EA.] | 93 | 2261701 | LOCKWASHER-STAR | | | |
| 44 | 2268602 | RIVET 1/8" SS [4 EA.] | 94 | 2263105 | NUT-HEX | | | |
| 45 | 2262709 | SPRING-LATCH PIN | 95 | 2261715 | SPACER-SWITCH 5 SP MODELS | | | |
| 46 | 2260501 | LATCH PIN [2 EA.] | 96 | 2280110 | KNOB-SPEED CONTROL 5SPD | | | |
| 47 | 2261544 | YOKE-TUBE | 97 | 2263000 | E-RING TRU-ARC | | | |
| 48 | 2264267 | ARM-UPPER, FW, LONG, 52" | 98 | 2260730 | CONNECTOR 1/4 MALE TAB | | | |
| | 2264262 | ARM-UPPER, FW, STD, 45" | 99 | 2332103 | SCREW-6-20 X 3/8 | | | |

2888460 Seal & Oring Kit

Edge 70 is 24-volt only!

