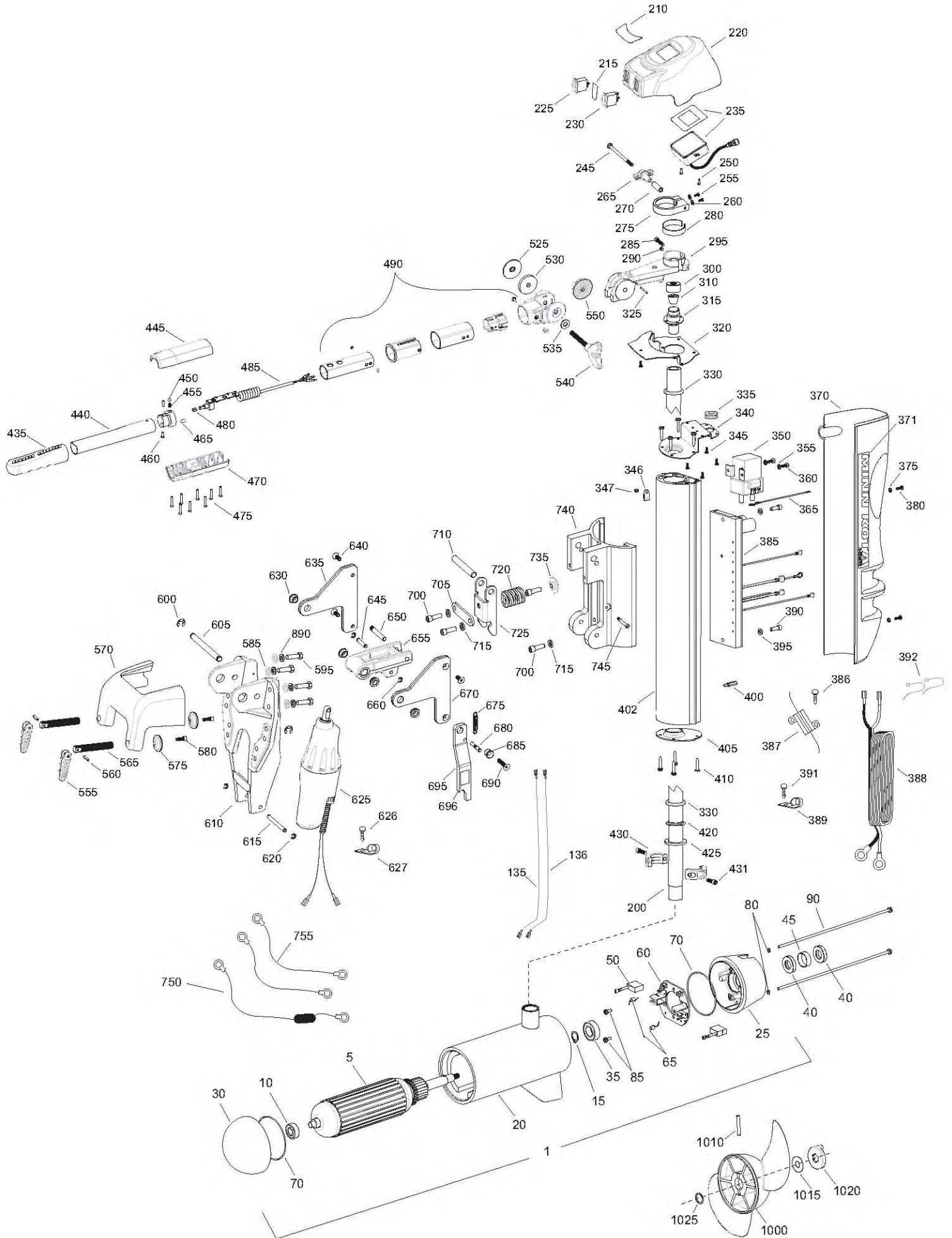


**E-Drive
Tiller Steer**
48 volt 40 amp

for use with "J" serial numbers
2-year warranty from the date of sale



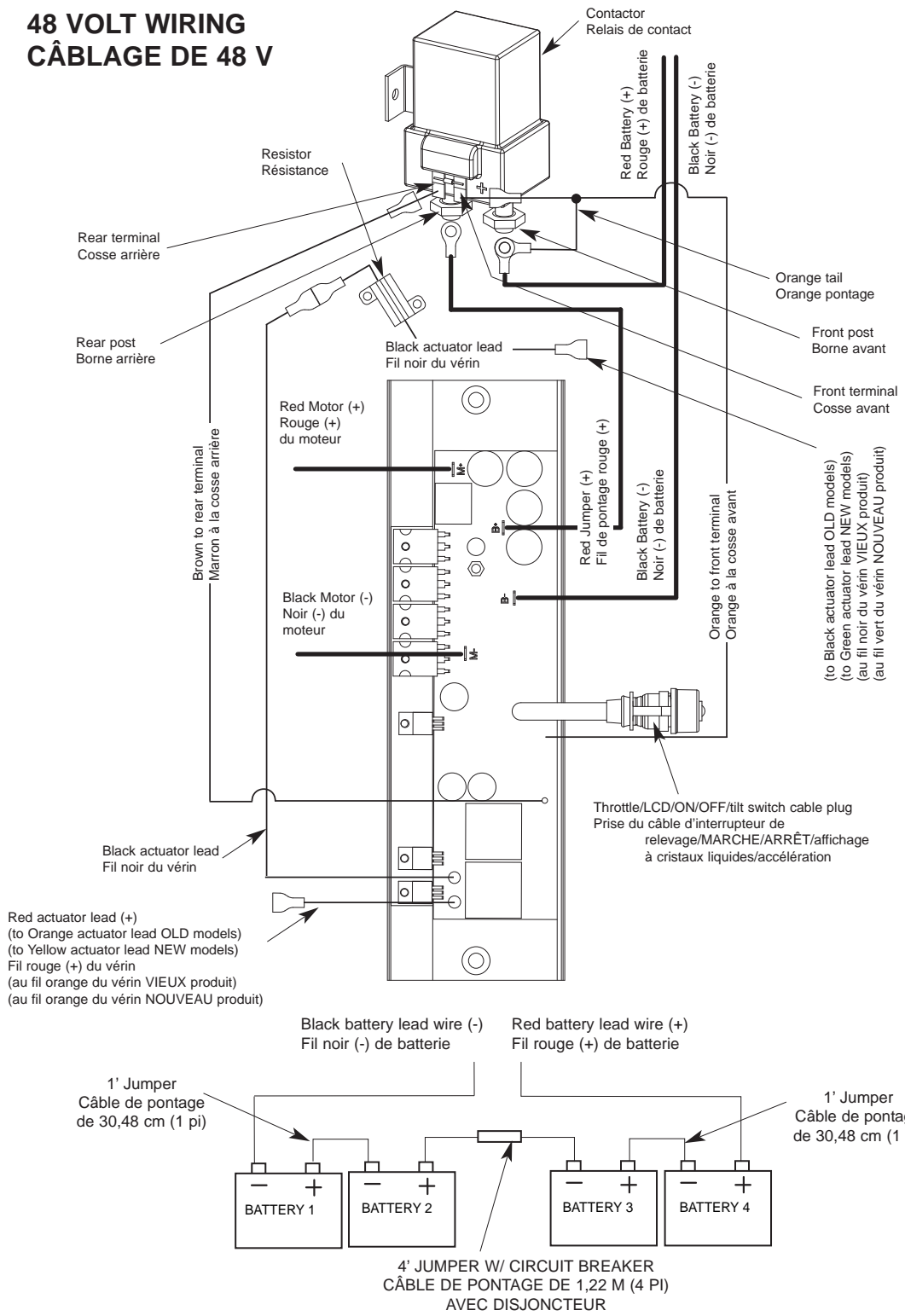
| Item | P/N | Description | Qty | Item | P/N | Description | Qty | Item | P/N | Description | Qty |
|------|-----------|-------------------------------|-----|------|---------|--------------------------------------|-----|------|----------|-------------------------------|-----|
| 1 | 2357000 | Motor Assembly | 1 | 365 | 2040600 | Wire, connecting 10 ga red | 1 | 627 | 2040721 | Clamp, cable 3/8 | 2 |
| 5 | 2-100-210 | Armature assembly | 1 | 370 | 2050220 | Shield, extrusion, vantage | 2 | 630 | 2047302 | Bearing, flange | 4 |
| 10 | 140-011 | Bearing, plain end | 1 | 371 | 2045611 | Decal, shield, E-drive | 1 | 635 | 2774801 | Link, upper, right side | 1 |
| 15 | 788-075 | Retaining ring | 1 | 375 | 2371715 | Lockwasher, #8 | 2 | 640 | 2043420 | Screw, 5/16-18 x 3/4 | 3 |
| 20 | 2-200-220 | Center housing assembly | 1 | 380 | 2332101 | Screw, 8-32 x 1/2 | 2 | 645 | 2042610 | Pin, upper, actuator | 1 |
| 25 | 2-300-210 | Brush end housing assembly | 1 | 385 | 2044008 | Control Board, E-drive | 1 | 650 | 2042618 | Pin, latch, breakaway | 1 |
| 30 | 421-310 | Plain end housing assembly | 1 | 386 | 2043418 | Screw, 4-40 x 3/8 | 2 | ■ | 2774305 | Arm assy [655, 630(2)] | 1 |
| 35 | 140-013 | Bearing, brush end | 1 | 387 | 2994071 | Resistor, E-drive | 1 | 655 | 2044301 | Arm- actuator, machined | 1 |
| 40 | 880-027 | Seal | 2 | 388 | 2040605 | Leadwire, prime power | 1 | 660 | 2263006 | E-ring, 5/16 | 4 |
| 45 | 725-097 | Paper tube | 1 | 389 | 2052512 | Cable clamp, 1/2 | 1 | 670 | 2770802 | Link, upper, left side | 1 |
| 50 | 188-096 | Brush | 2 | 390 | 9954533 | Screw, 1/4-20 x 3/4 SHCS | 2 | 675 | 2042722 | Spring, extension | 1 |
| 60 | 2-600-210 | Brush plate assembly | 1 | 391 | 2053415 | Screw, 8-32 x 3/8 | 1 | 680 | 2062624 | Pin, stabilizer | 1 |
| 65 | 975-041 | Brush spring | 2 | 392 | 9950433 | Tie wrap | 4 | 685 | 2047320 | Bushing, tilt arm | 1 |
| 70 | 701-044 | O-ring, motor | 2 | 395 | 9950357 | Lockwasher, 1/4 | 2 | 690 | 2043428 | Screw, 5/16-18 x 1 1/2 | 1 |
| 80 | 701-009 | O-ring, thru-bolt | 2 | 400 | 2042911 | Stand-off | 1 | 695 | 2774309 | Arm, stabilizer [695-696] | 1 |
| 85 | 2053410 | Screw, 8-32 | 2 | 402 | 2046510 | Extrusion, main, E-drive | 1 | 696 | 2045630 | Warning Decal | 1 |
| 90 | 830-096 | Thru-bolt | 2 | 405 | 2040200 | Cap-bottom, E-drive | 1 | 700 | 9954533 | Screw, 1/4-20 x 3/4 SHCS | 4 |
| 135 | 640-030 | Leadwire, black | 1 | 410 | 2053413 | Screw 10-16 x 1 type AB | 8 | 705 | 2041940 | Plate, latch, breakaway | 1 |
| 136 | 640-130 | Leadwire, red | 1 | 420 | 2266515 | Bearing cone | 1 | 710 | 2042616 | Pin, upper, breakaway | 1 |
| 200 | 2040211 | Tube, Motor | 1 | 425 | 2041700 | Washer 1 3/16 x 1 3/4 | 1 | 715 | 9950357 | Lockwasher 1/4 | 4 |
| 210 | 2065606 | Decal, cover, E-tiller | 1 | 430 | 2261622 | Collar half, alum | 2 | 720 | 2042715 | Spring, breakaway | 1 |
| 215 | 2065606 | Decal, front, E-tiller | 1 | 431 | 2263453 | Screw, 1/4-20 x 1 SHCS | 2 | 725 | 2047200 | Latch, breakaway | 1 |
| 220 | 2040217 | Cover, E-tiller | 1 | ■ | 2990945 | Outer handle assembly [435,440] | 1 | 735 | 2041500 | Shim washer, breakaway | 1 |
| 225 | 2044022 | Switch, Power, E-tiller | 1 | 435 | 2070422 | Grip | 1 | 740 | 2041810 | Extrusion, breakaway | 1 |
| 230 | 2044020 | Switch, Tilt, E-tiller | 1 | 440 | 2042030 | Tube, handle grip | 1 | 745 | 2043504 | Bolt, shoulder 1/4-20 x 1 1/4 | 1 |
| 235 | 2777401 | Display/harness assembly | 1 | 445 | 2040910 | Handle, top | 1 | 750 | 299-8200 | Circuit breaker assy | 1 |
| 245 | 2043502 | Bolt, 1/4-20 x 4" Hex HD | 1 | ■ | 2886000 | Clamp bracket [450-465] | 1 | 755 | 234-0610 | Connector cable | 2 |
| 250 | 2302100 | Screw, 6-20 x 1/2 | 2 | 450 | 2046000 | Ball, detent | 1 | | | | |
| 255 | 2332100 | Screw, 8-32 x 3/8 | 2 | 455 | 2042720 | Spring, detent | 1 | | | | |
| 260 | 2051717 | Washer, #8 | 2 | 460 | 2301310 | Screw, 8-18 x 1/2 | 2 | ■ | 1378140 | Propeller kit | 1 |
| 265 | 2043430 | Knob, clamp-collar | 1 | 465 | 2043205 | Stop, post | 1 | 1010 | 2352602 | Drive pin | 1 |
| 270 | 2047317 | Bushing, steering tension | 1 | 470 | 2040915 | Handle, bottom | 1 | 1015 | 2091701 | Washer, prop | 1 |
| 275 | 2040210 | Brake, steering | 1 | 475 | 2043426 | Screw, 8 x 7/8 | 8 | 1020 | 2198401 | Nut, nylock, prop, Anode | 1 |
| 280 | 2043800 | Band, friction brake | 1 | 480 | 2042705 | Spring - knob, E-drive | 1 | 1025 | 2374611 | O-ring, prop | 1 |
| ■ | 2774306 | Tiller arm assy [285-295,325] | 1 | 485 | 2044040 | Ctrl board, handle assy | 1 | | | | |
| 285 | 2263453 | Bolt 1/4-20 x 1 | 1 | 490 | 2990922 | Handle assy, outer | 1 | | | | |
| 290 | 2043430 | Screw, set - half dog pt | 1 | 525 | 2053115 | Washer, handle assy | 1 | | | | |
| 295 | 2044306 | Arm, tiller, machined | 1 | 530 | 2051736 | Washer, spacer | 1 | | | | |
| 300 | 9950339 | Cap, motor fitting | 1 | 535 | 2051737 | Washer, .4 x .875 | 1 | | | | |
| 310 | 2382900 | Grommet, split | 1 | 540 | 2050921 | Handle, tension, long | 1 | | | | |
| 315 | 2046201 | Bearing race, main E-drive | 1 | 550 | 2050015 | Ratchet-disk, handle assy | 1 | | | | |
| 320 | 2041945 | Plate, cover | 1 | ■ | 2881986 | Clamp bracket kit [555-595] | 1 | | | | |
| 325 | 2042620 | Pin, spring | 1 | ■ | 2880925 | Clamp screw kit [555-580 except 570] | 1 | | | | |
| 330 | 2264000 | Beaing, steel ball | 1 | 600 | 2043000 | E-ring, .500 | 2 | | | | |
| 335 | 2042905 | Grommet | 1 | 605 | 2042614 | Pin, pivot, upper | 1 | | | | |
| 340 | 2040207 | Cap-top | 1 | 610 | 2041981 | Bracket, machined | 1 | | | | |
| 345 | 2372100 | Screw, 8-18 x 5/8 | 5 | 615 | 2042612 | Pin, lower, actuator | 1 | | | | |
| 350 | 2040700 | Contacto | 1 | 620 | 2263006 | E-ring 5/16 | 4 | | | | |
| 355 | 2261718 | Washer, lock - #10 | 2 | 625 | 2992802 | Actuator assy w/ terminals | 1 | | | | |
| 360 | 2223454 | Screw, 10-32 x 1/2 | 2 | 626 | 2053415 | Screw, 8-32 x 3/8 | 2 | | | | |

2884460 Seal & Oring Kit

* This item is part of an assembly. This item cannot be sold separately due to machining and /or assembly that is required.

* Cet article fait part d'un assemblage. Cet article ne peut pas être vendu séparément dû à la rectification et/ou l'assemblage qu'il requière.

48 VOLT WIRING CÂBLAGE DE 48 V



LCD WIRING CÂBLAGE CRISTAUX LIQUIDES

