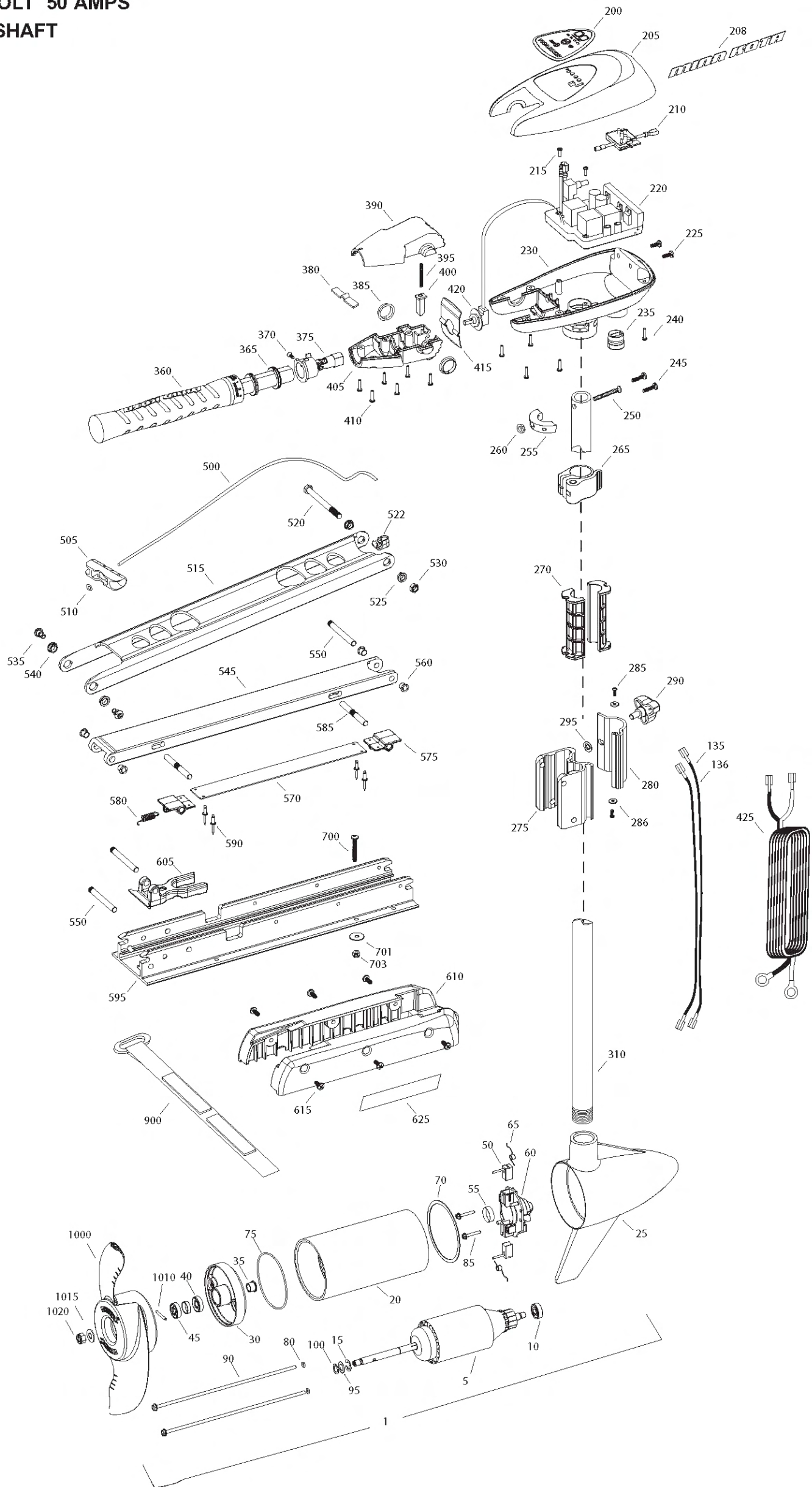


**Riptide 55 SE**  
**55 LBS THRUST**  
**12 VOLT 50 AMPS**  
**52" SHAFT**

for use with "J" serial numbers  
3-year warranty from the date of sale



Item	P/N	Description	Qty	Item	P/N	Description	Qty	Item	P/N	Description	Qty	Item	P/N	Description
1	2097095	12V Motor 52" SW	1											
5	2-100-115	Armature assembly	1	365	2060015	Bearing, handle	2	1015	2151726	Washer, prop, small	1			
10	140-010	Bearing	1	370	2063405	Screw, #6 PFH SS	1	1020	2198400	Nut, nylock, prop, Anode	1			
15	788-015	Retaining ring	1	375	2884092	Yoke / spider assy, VARS	1							
20	2-200-301	Center housing assembly	1	380	2302742	Spring, detent, off	1							
25	421-336	Brush end housing assembly	1	385	2060005	Bearing, handle pivot	2							
30	2-400-337	Plain end housing assembly	1	390	2060900	Handle pivot, top	1							
35	144-049	Flange bearing	1	395	2302745	Spring, release button	1							
40	880-003	Seal	1	400	2063700	Button, release	1							
45	880-006	Seal with shield	1	405	2060905	Handle pivot, bottom	1							
50	188-036	Brush	2	410	2303412	Screw, #6 x 5/8 SS	6							
55	725-050	Paper tube	1											
60	738-036	Brush plate	1	415	2062715	Spring, handle pivot	1							
65	975-040	Brush spring	2	420	2061700	Washer, pot holder	1							
70	337-036	Gasket	1	425	2992523	Leadwire assy	1							
75	701-081	O-ring, motor	1											
80	701-008	O-ring, thru-bolt	2	■	2991701	Mount, Bow Assy	1							
85	830-007	Screw, 8-32	2			[270-295], [500-625]								
90	830-042	Thru-bolt	2	500	2251601	Rope	1							
95	990-067	Washer, steel	2	505	2150400	Pull grip	1							
100	990-070	Washer, nylatron	2	510	2151700	Washer	1							
135	640-008	Leadwire, black	1	515	2264263	Arm, upper, std, sw	1							
136	640-107	Leadwire, red	1	520	2263506	Bolt, 3/8-16 x 4.25, ss	1							
■	2888460	Seal and O-ring Kit		522	2262310	Rope guide	1							
				525	2267303	Bushing, upper 3/8"	2							
200	2195654	Decal, c-box cover	1	530	2263115	Nut, 3/8-16 SS	1							
205	2060296	C-box cover	1	535	2263510	Bolt, shoulder	2							
208	2325666	Decal - MinnKota	2	540	2267302	Bushing, SS	2							
210	2074080	Battery meter, 12v SW	1	545	2994343	Arm, Lower, std, sw	1							
215	3043427	Screw, #8 x 7/8 SS	2	550	2260504	Pin, pivot ss	3							
220	2184006	Control board, 12v	1	560	2266002	Bushing, nyliner 3/8	4							
225	2303434	Screw, #8-30 x 5/8 SS	2	■	2993811	Latch strap assy [570-590]	1							
230	2062503	Control box, VARS, SW	1	570	2263605	Latch strap	1							
235	2062905	Strain relief	1	575	2261902	Latch Bracket	2							
240	2303412	Screw, #6 x 5/8 SS	6	580	2262709	Spring, latch pin, ss	1							
245	2263434	Screw, #8 x 1 SS	2	585	2260502	latch pin, ss	2							
250	2383407	Screw, #10-24 x 2 SS	1	590	2268602	Rivet, 1/8 ss	4							
255	2061517	Collar, c-box	1	595	2266503	Bowplate w/ insert, std, sw	1							
260	2383124	Nut, 10-24, nylock, SS	1	605	2261544	Yoke,	1							
265	2991521	Cam lock/depth collar assy	1	610	2263906	Motor rest, std, sw	1							
				615	2332104	Screw, 1/4-20 x 5/8, ss	6							
				625	2265668	Decal, motor rest	2							
270	2261537	Hinge sleeve	2											
■	2991839	Hinge & door assembly [275-295]	1	■	2994830	Bag assembly	1							
275	2261894	Hinge base assembly	1	700	2263431	Screw, 1/4-20 x 3 1/2" PPH, SS	6							
280	2261898	Hinge door	1	701	2301720	Washer, rubber mounting	6							
285	2332100	Screw, 8-32 x 3/8, ss	2	702	2261713	Washer, 1/4 SS	6							
286	2261732	Washer, #8 nylon	2	703	2263101	Nut, 1/4-20 Nylock, SS	6							
290	2260906	Knob	1											
295	2261728	Washer, retaining	1	900	2263804	Strap, hold down	1							
310	2032034	Tube Composite 52"	1	■	1378131	Propeller kit WW2								
				■	2994875	Propeller bag assy								
■	2990957	Handle assy, VARS [360-410]	1	1000	2091160	Propeller WW2	1							
360	2990456	Grip/handle assy, VARS [360-375]	1	1010	2092600	Drive pin, small	1							

\* This item is part of an assembly. This item cannot be sold separately due to machining and /or assembly that is required.

RT 55 is 12-volt only!

THIS IS A UNIVERSAL MULTI-VOLTAGE DIAGRAM. DOUBLE CHECK YOUR MOTORS VOLTAGE FOR PROPER CONNECTIONS

### FIVE SPEED SWITCH INTERRUPTEUR A CING VITESSES

