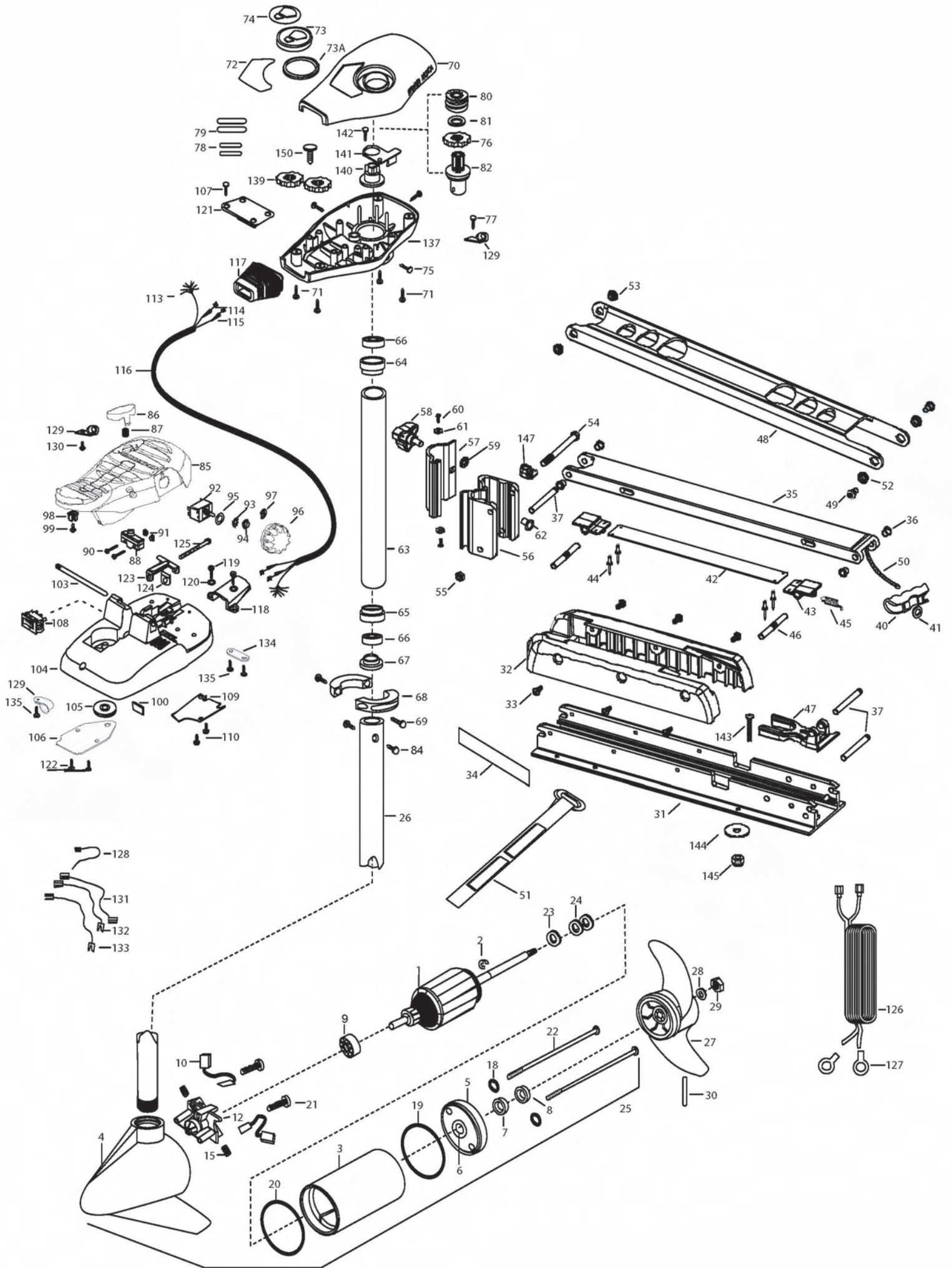


**EDGE 70**  
**70 LBS THRUST**  
**24 VOLT 42 AMPS**  
**45"/52" SHAFT**

for use with "L" serial numbers  
2-year warranty



1	2-100-119	ARM ASSEMBLY 24V 3.625	49	2263510	BOLT-SHOULDER, SS [2 EA.]	99	2332103	SCREW-6-20 X 3/8
2	788-015	RETAINING RING	50	2251601	ROPE- 44.5" (45" MODEL)	100	2266413	TENSION SCREW PLATE FT PEDL
3	2-200-005	HOUSING ASSEMBLY CENTER 3.625 TXT		2251603	ROPE-48" (52" MODEL)	103	2260511	PIN-PIVOT A/T FT PDL
4	2-300-042	HOUSING-ASSEMBLY BRUSH END 3.625 45"	51	2263805	VELCRO STRAP	104	2992104	FT PEDAL BASE/PIN ASSEMBLY SONAR
	2-300-139	HOUSING-ASSEMBLY BRUSH END 3.625 52"	52	2267302	BUSHING-LOWER 7/16" ID, SS	105	2262301	PULLEY- FOOT PEDAL
5	2-400-101	PLAIN END HOUSING ASSEMBLY	53	2267303	BUSHING-UPPER 3/8" ID, SS	106	2266401	COVER-PULLEY STAMPING
6	144-049	BEARING- FLANGE [SERVICE ONLY]	54	2263505	BOLT 3/8-16 X 4.25"	107	2223430	SCREW-#8X 3/4 PPH TYPE 25 SS [4.EA]
7	880-003	SEAL	55	2263114	NUT-NYLOCK JAM 3/8-16	108	2254031	SWITCH-MOM/OFF/COM
8	880-006	SEAL WITH SHIELD	56	2261872	HINGE BASE, FW	109	2266412	SWITCH PLATE, FT PEDAL
9	140-010	BEARING -BALL	57	2261877	HINGE DOOR, FW	110	2332103	SCREW-6-20 X 3/8 THD [2.EA]
10	188-037	BRUSH ASSEMBLY [2.EA ]	58	2260905	HANDLE-SOFT GRIP, L&D	113	2261208	WIRE HARNESS, A/T FT. PED
12	738-036	BRUSH PLATE W/HOLDER 3.625	59	2261728	WASHER-RETAINING 3/8"	114	2267505	CABLE ASSEMBLY-RIGHT 5'
15	975-040	SPRING- TORSION [2.EA]	60	2053415	SCREW #8-32 X 3/8" TRI [2 EA.]	115	2267515	CABLE ASSEMBLY-LEFT 5'
18	701-008	O-RING [2. EA]	61	2261732	WASHER #8, NYLON [2 EA.]	116	2265430	CABLE JACKET 5'
19	337-036	GASKET	■	2992012	TUBE W/BEARING RACE ASSEMBLY 21"	117	2265110	BOOT-CONTROL BOX
20	701-081	O-RING		2992016	TUBE W/BEARING RACE ASSEMBLY 24"	118	2265115	BOOT-FOOT PEDAL BASE
21	830-007	SCREW- SELF-THREAD 8-32X1.7 [2.EA ]	62	2264703	INSERT_THREADED	119	2372100	SCREW-8-18 X 5/8 THD [2.EA]
22	830-008	THRU BOLT 10-32 X 9.205 [2.EA]	63	2272069	TUBE OUTER-21" 4 HOLES	120	2261714	WASHER-MAXXUM FT PDL [2.EA]
23	990-067	WASHER- STEEL THRUST		2272067	TUBE OUTER -24" 4 HOLES	121	2261901	BRACKET-CONDUIT AT/MAX
24	990-070	WASHER- NYLATRON [2.EA]	64	2266260	BEARING RACE	122	2223430	SCREW-8-18 X 3/4" [4.EA]
25	2096035	MTR ASSEMBLY 24V 3.625 5SPD 45"	65	2266220	BEARING RACE-STEEL	123	2263210	BRACKET- CONDUIT ADJUSTMENT
	2096039	MTR ASSEMBLY 24V 3.625 5SPD 52"	66	2266000	BEARING BALL-STEEL [2.EA]	124	2263104	NYLOCK KEEPER
26	2032061	TUBE (COMP)W/CSK HOLE 45"	67	2266115	BEARING CONE	125	2263466	SCREW-1/4-20 X 2 STL PPH
	2032067	TUBE (COMP)W/CSK HOLE 52"	68	2261622	COLLAR HALF-ALUMINUM- [2.EA]	126	2261235	LEADWIRE-BATTERY
■	1378131	PROPELLER KIT	69	2263453	SCREW-1/4X20 X 1" SHCS SS [2. A]	127	2020700	TERMINAL RING, 3/8" [2.EA]
27	2091160	PROPELLER W/WEDGE 2	70	2260286	COVER-CTR BOX EDGE/FC BLK	128	2256300	TIE WRAP-5.5" BLACK
28	2151726	WASHER- 5/16 SS	71	2372100	SCREW-8-18 X 5/8 THD [4.EA]	129	2263201	CLAMP WIRE HARNESS MICRO [3 EA.]
29	2053101	NUT-PROP NYLOC	72	2265674	DECAL-COVER EDGE	130	2332103	SCREW-6-20 X 3/8 THD
30	2092600	PIN-DRIVE SS	73	2260150	POINTER DISC TRNSLCNT RED	131	2260301	CONNECTING WIRE -SWITCH
31	2266507	BOWPLATE, FW, LONG, 52"	73A	2261733	WASHER-FOAM, INDICATOR	132	2260312	WIRE,BLK W/WHT- 19 1/2
	2266502	BOWPLATE, FW, STD, 45"	74	2265800	DECAL-INDICATOR	133	2260322	WIRE,BLK W/BLUE -12"
32	2263905	MOTOR REST, BLK.	75	2053414	SCREW-8-32 X 1/2 TRI LOBE [3. EA]	134	2263205	LEADWIRE CLAMP
33	2303430	SCREW 1/4-20 X 5/8 [6 EA.]	76	2267800	GEAR-INDICATOR	135	9953104	SCREW-8 X 1/2" SS
34	2265667	MOTOR REST DECAL, FW [2 EA.]	77	2372100	SCREW-8-18 X 5/8 SS	137	2262535	CONTROL BOX-PLASTIC
■	2991711	BOWMOUNT FW ASSEMBLY, STD	78	2375400	SHRINK TUBE-1/4OD X 1-3/4 [2. EA]	139	2267800	GEAR-INDICATOR [2.EA]
	2991706	BOWMOUNT FW ASSEMBLY, LONG	79	2355410	SHRINK TUBE-3/8 OD X 2 [2. EA]	140	2262220	INDICATOR-DRIVE
35	2264346	LOWER ARM, FW, LONG	80	2232360	PULLEY-CABLE DRUM	141	2261905	BRACKET/INDICATOR
	2264341	LOWER ARM, FW, STD.	81	2261730	WASHER-NYLON A/T	142	2372100	SCREW-8-18 X 5/8 (SS)
36	2266002	NYLINER 3/8" SHAFT [4 EA.]	82	2996246	BEARING RACE/ PINION ASSEMBLY	■	2994838	BAG ASSEMBLY
37	2260503	PIVOT PIN [3 EA.]	84	2263410	SCREW-8-32 X 5/16 ZN PL [2.EA]	*143	2263462	SCREW 1/4-20X2 SS [6.EA]
40	2150400	PULL-GRIP	85	2994496	FOOT PEDAL/PLUG ASSEMBLY AT	*144	2261713	WASHER-1/4 FLAT 18-18 [6.EA]
41	2151700	WASHER-EYE SHAFT .562 OD	86	2283700	PUSH-BUTTON	*145	2263103	NUT- 1/4-20 NYLOC-JAM [6.EA]
■	2993812	LATCH STRAP ASSEMBLY, LONG, 52"	87	2302732	SPRING-LOWER PEDAL SS	147	2262310	GUIDE ROPE
	2993811	LATCH STRAP ASSEMBLY, STD, 45"	88	2264040	SWITCH MOMENTARY	150	2266701	PLUG, NYLON PUSH RIVET
42	2263607	LATCH STRAP, LONG, 50"	90	2262114	SCREW-MOUNTING/SWITCH [2.EA]	■	2888460	SEAL & ORING KIT
	2263605	LATCH STRAP, STD, 45"	91	2233100	NUT-SWITCH MOUNT [2.EA]			
43	2261902	BRACKET-LATCH [2 EA.]	92	2264026	SWITCH-S SPEED			
44	2268602	RIVET 1/8" SS [4 EA.]	93	2261701	LOCKWASHER-STAR			
45	2262709	SPRING-LATCH PIN	94	2263105	NUT-HEX			
46	2260501	LATCH PIN [2 EA.]	95	2261715	SPACER-SWITCH 5 SP MODELS			
47	2261544	YOKE-TUBE	96	2280110	KNOB-SPEED CONTROL 5SPD			
48	2264267	ARM-UPPER, FW, LONG, 52"	97	2263000	E-RING TRU-ARC			
	2264262	ARM-UPPER, FW, STD, 45"	98	2260730	CONNECTOR 1/4 MALE TAB			

THIS IS A UNIVERSAL MULTI-VOLTAGE DIAGRAM. DOUBLE CHECK YOUR MOTORS VOLTAGE FOR PROPER CONNECTIONS  
 CECI EST UN SCHÉMA À TENSION MULTIPLE UNIVERSEL. REVÉRIFIEZ LA TENSION DE VOTRE MOTEUR POUR BIEN LE BRANCHER.

Edge 70 is 24-volt only!

