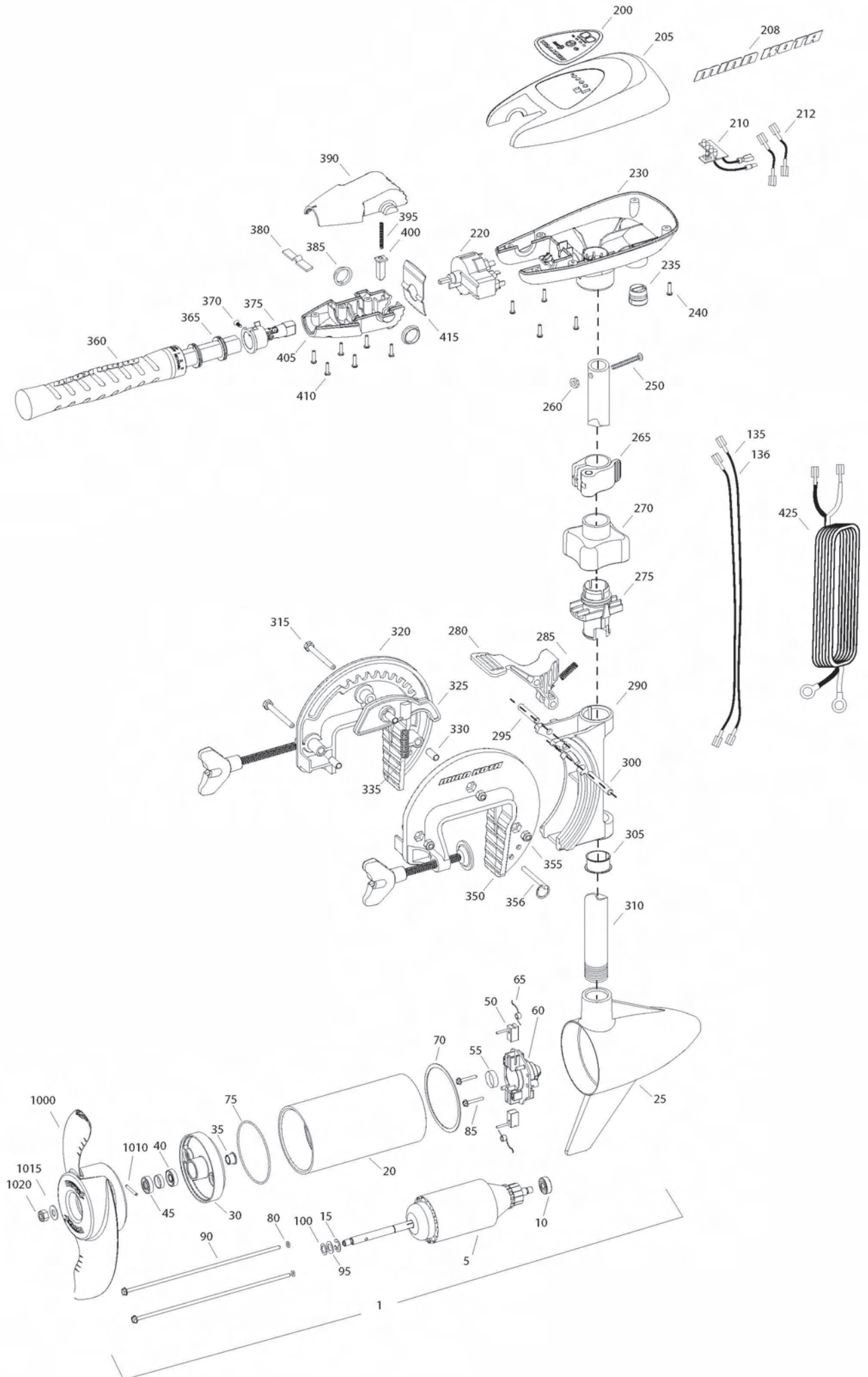


**TRAXXIS 55/SC**  
**55 LBS THRUST**  
**12 VOLT 50 AMPS**  
**36" SHAFT**

for use with "L" serial numbers  
 2-year warranty



In the U.S.A., replacement parts may be ordered directly from MINN KOTA Parts Dept., 121 Power Drive, P.O. Box 8129 Mankato, Minnesota 56002-8129. In Canada, parts may be ordered from any of the Canadian Authorized Service Centers shown on the enclosed list. Be sure to provide the MODEL and SERIAL numbers of your motor when ordering parts. Please use the correct part numbers from the parts list. Payment for any parts ordered from the MINN KOTA parts department, may be by cash, personal check, Discover Card, MasterCard or VISA. To order, call 1-800-227-6433 or FAX 1-800-527-4464.

Fuera de los Estados Unidos, consultar la lista anexa para ubicar el Centro de servicio autorizado MINN KOTA. No dejar de incluir el número del MODELO y el número de SERIE del motor para el cual se solicitan las piezas. Usar siempre los números de pieza correctos indicados en la lista de piezas.

Item	P/N	Description	Qty	Item	P/N	Description	Qty	Item	P/N	Description	Qty	Item	P/N	Description	Qty
1	2097098	12V Motor 36" FW	1	355	2263104	Nut, 1/4-20, nylock, Zinc	3								
5	2-100-121	Armature assembly	1	356	2062604	Pin, stop	1								
10	140-010	Bearing	1												
15	788-015	Retaining ring	1	■	2990956	Handle assy, SC [360-410]	1								
20	2-200-101	Center housing assembly	1	360	2990451	Grip/handle assy, SC [360-375]	1								
25	2-300-199	Brush end housing assembly	1	365	2060015	Bearing, handle	2								
30	2-400-101	Plain end housing assembly	1	370	2063405	Screw, #6 PFH SS	1								
35	144-049	Flange bearing	1	375	2884091	Yoke / spider assy, 5SPD	1								
40	880-003	Seal	1	380	2302742	Spring, detent, off	1								
45	880-006	Seal with shield	1	385	2060005	Bearing, handle pivot	2								
50	188-036	Brush	2	390	2060900	Handle pivot, top	1								
55	725-050	Paper tube	1	395	2302745	Spring, release button	1								
60	738-036	Brush plate assembly	1	400	2063700	Button, release	1								
65	975-040	Brush spring	2	405	2060905	Handle pivot, bottom	1								
70	337-036	Gasket	1	410	2303412	Screw, #6 x 5/8 SS	6								
75	701-081	O-ring, motor	1												
80	701-008	O-ring, thru-bolt	2	415	2062715	Spring, handle pivot	1								
85	830-007	Screw, 8-32	2	425	2992524	Leadwire assy, includes [235]	1								
90	830-042	Thru-bolt	2												
95	990-067	Washer, steel	2	■	1378170	Propeller kit									
100	990-070	Washer, nylatron	2	1000	2091170	Propeller	1								
135	640-006	Leadwire, black	1	1010	2092600	Drive pin, small	1								
136	640-115	Leadwire, red	1	1015	2151726	Washer, prop, small	1								
■	2888460	Seal and O-ring Kit		1020	2053101	Nut, nylock, prop, small	1								
200	2065694	Decal, c-box cover	1												
205	2060295	C-box cover	1												
208	2325665	Decal - MinnKota	2												
210	2074070	Battery meter, 12v FW	1												
220	2064023	Switch 5 speed	1												
230	2062505	Control box, 5 SPD, FW	1												
235	2062905	Strain relief	1												
240	2303412	Screw, #6 x 5/8 SS	6												
250	2383407	Screw, #10-24 x 2 SS	1												
260	2383124	Nut, 10-24, nylock, SS	1												
265	2991521	Cam lock/depth collar assy	1												
■	2991795	Bracket assy, Composite [270-356]	1												
270	2060100	Knob, steering tension, soft	1												
275	2068400	Collet	1												
280	2064200	Lock arm	1												
285	2062701	Spring, lock arm	1												
290	2061821	Hinge	1												
295	2062602	Pin, lock, Zinc	1												
300	2062602	Pin, lock, Zinc	1												
305	2037301	Bushing, hinge	1												
310	2032052	Tube 36"	1												
315	2063500	Bolt 1/4-20 x 2 3/8", Zinc	3												
320	2771950	Bracket, right, FW	1												
325	2067905	Cam deactivator	1												
330	2067306	Bushing, dowel 1/4 x 1/2	3												
335	2062700	Spring, cam deactivator	1												
■	2881380	Clamp screw kit	2 per kit												
350	2771955	Bracket, left, FW	1												

\* This item is part of an assembly. This item cannot be sold separately due to machining and /or assembly that is required.

P/N 2064958 REV. J ECN 32764 11-10

# 12-24 VOLT 5 SPEED MODELS MODÈLES 12-24 V INTERRUPTEUR

THIS IS A UNIVERSAL MULTI-VOLTAGE DIAGRAM. DOUBLE CHECK YOUR MOTORS VOLTAGE FOR PROPER CONNECTIONS  
CECI EST UN SCHEMA À TENSION MULTIPLE UNIVERSEL. REVÉRIFIEZ LA TENSION DE VOTRE MOTEUR POUR BIEN LE BRANCHER.

Traxxas 55 is 12-volt only!

