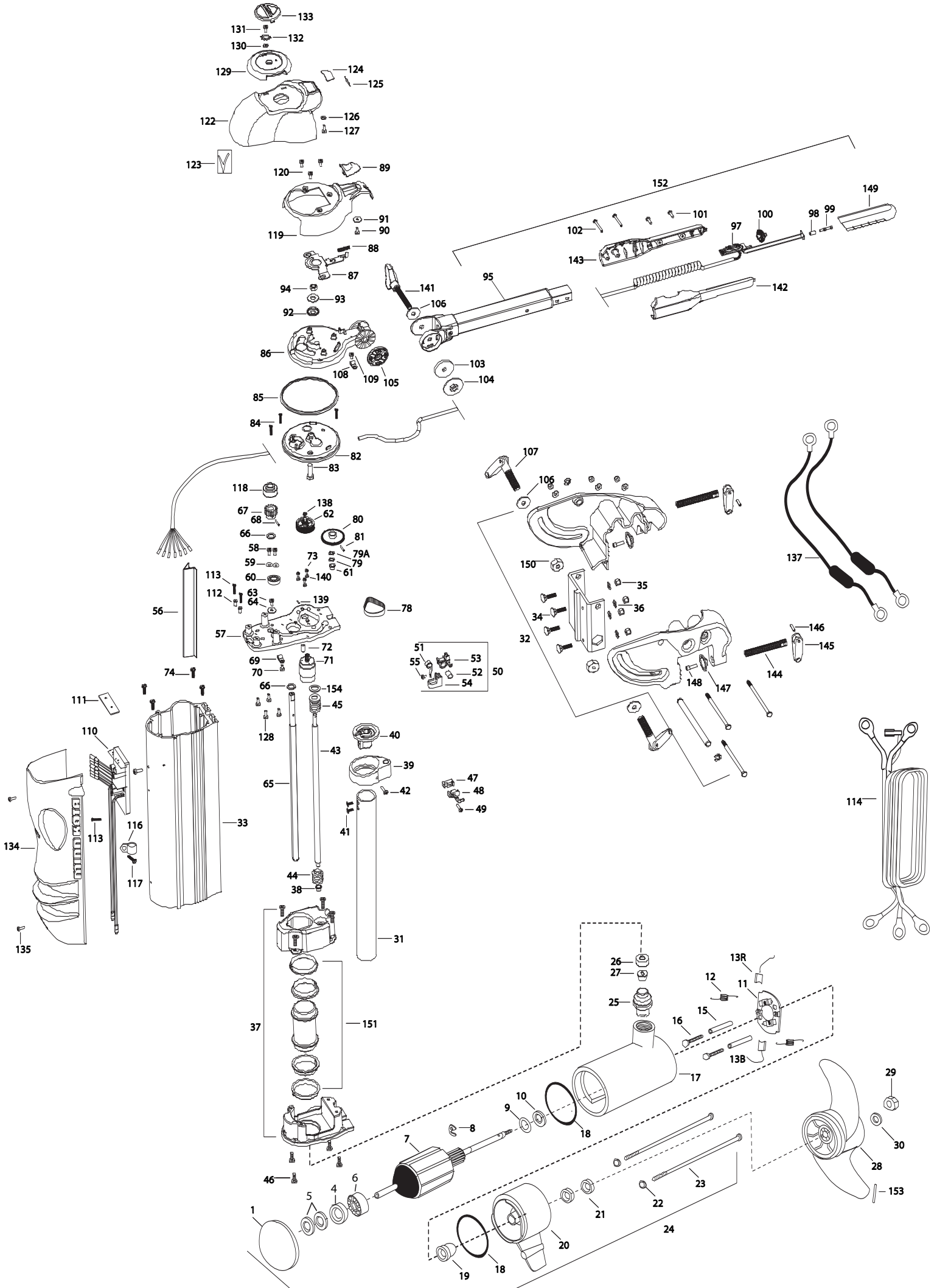


VANTAGE 80
80 LBS THRUST
24 VOLT 56 AMPS

for use with "L" serial numbers
2-year warranty



In the U.S.A., replacement parts may be ordered directly from MINN KOTA Parts Dept. 121 Power Drive, P.O.Box 8129, Mankato, Minnesota 56002-8129. In Canada, parts may be ordered from any of the Canadian Authorized Service Centers shown on the enclosed list. Be sure to provide the MODEL and SERIAL numbers of your motor when ordering parts. Please use the correct part numbers from the parts list. Payment for any parts ordered from the MINN KOTA parts department, may be by cash, personal check, Discover Card, MasterCard or VISA. To order, call 1-800-227-6433 or FAX 1-800-527-4464.

Fuera de los Estados Unidos, consultar la lista anexa para ubicar el Centro de servicio autorizado MINN KOTA. No dejar de incluir el número del MODELO y el número de SERIE del motor para el cual se solicitan las piezas. Usar siempre los números de pieza correctos indicados en la lista de piezas.

| | | | | | | | | |
|-----|-----------|----------------------------------------|------|---------|-----------------------------------------|-------------------------------|---------|--------------------------------------|
| 1 | 421-276 | PLAIN END HOUSING ASSEMBLY | *57 | 2051927 | TOP PLATE, VANTAGE | *106 | 2051737 | WASHER-FLAT,ID.406 X OD.8 |
| 4 | 990-045 | THRUST SPACER | 58 | 2053414 | SCREW-#8-32 X 1/2 TRI-LOBE[2.EA] | *107 | 2050922 | HANDLE, TENSION, SHORT |
| 5 | 992-010 | SPRING WASHER [2.EA] | 59 | 2051717 | WASHER-#8 SAE FLAT ZNK PLT [2.EA] | 108 | 2052510 | CABLE CLAMP, 3/16" VANTAGE [2.EA] |
| 6 | 140-010 | BALL BEARING | *60 | 2057306 | BEARING-BALL (VANTAGE) | 109 | 2053415 | SCREW-#8-32 X 3/8" TRI-LB[3.EA] |
| 7 | 2-100-214 | ARMATURE ASSEMBLY 24V 4" | *61 | 2057302 | BEARING-UPPER, LIFT SCREW | *110 | 2774041 | CNTRL BRD ASSY 24/36V W/PAD INCL.111 |
| 8 | 788-040 | RETAINING RING | *62 | 2052630 | PIN, CLUSTER GEAR | *111 | 2315105 | INSULATING PAD |
| 9 | 990-051 | WASHER-THRUST, STEEL | 63 | 2053415 | SCREW-#8-32 X 3/8 TRI-LOBE P | 112 | 2261712 | SHOULDER WASHER [2.EA] |
| 10 | 990-052 | WASHER- NYLATRON | 64 | 2051716 | WASHER-FENDER #10 | 113 | 2053407 | SCREW-#8-32 X .75 PPH[3.EA] |
| ■ | 2-600-144 | BRUSH/WIRE/PLATE ASSEMBLY INCL.11-13 | 65 | 2052001 | SHAFT-STEERING, VANTAGE | 114 | 2051220 | LEADWIRE,24/36V,3 CONDUCT |
| *11 | 738-004 | BRUSH PLATE 4" TERMINAL | 66 | 2051706 | WASHER-SPRING SUPPORT[2.EA] | 116 | 2052512 | CABLE CLAMP, 1/2" VANTAGE |
| *12 | 975-041 | SPRING -TORSION [2.EA] | 67 | 2052205 | GEAR, STEERING TUBE MACHINED | 117 | 2053415 | SCREW-#8-32 X 3/8" TRI-LOBE P |
| 13 | 188-094 | BRUSH | *68 | 2052615 | PIN-DRIV-LOK 1/8 X 1 1/8 | 118 | 2052210 | ROLLER-STEERING SHAFT |
| 15 | 973-025 | SPACER -BRUSH PLATE [2.EA] | 69 | 2052510 | CABLE CLAMP, 3/16" VANTAGE | ■ | 2880102 | CONTROL HEAD COVER LATCH KIT |
| 16 | 830-027 | SCREW -SELF THREADED 10-32 X 2" [2.EA] | 70 | 2053415 | SCREW-#8-32 X 3/8 TRI-LOBE P | 119 | 2050200 | COVER-CONTROL HEAD |
| 17 | 2-200-160 | CENTER HOUSING FIELD ASSEMBLY | 71 | 2777812 | MOTOR-LIFT (12,24,36V) | 120 | 2053415 | SCREW-#8-32 X 3/8" TRI-LOBE[3.EA] |
| 18 | 701-043 | O-RING (2 REQ'D) | 72 | 2058411 | TENSIONER-BELT (VANTAGE) | 121 | 2012100 | SCREW-8-18 X 5/8" THD CUT[3.EA] |
| 19 | 144-017 | BEARING -FLANGE | 73 | 2053422 | SCREW - 3MM | 122 | 2050211 | SHROUD-CONTROL HEAD |
| 20 | 2-300-160 | BRUSH END HOUSING ASSEMBLY | 74 | 2053413 | SCREW-10-16X1' TYPE AB,HEX[4.EA] | 123 | 2055612 | DECAL-SHROUD (VANTAGE)[2.EA] |
| 21 | 880-025 | SEAL [2.EA] | ■ | 2882201 | CLUSTER GEAR / FLANGE PULLEY KIT | 124 | 2055604 | DECAL-COVER, 24V |
| 22 | 701-009 | O-RING -THRU BOLT [2.EA] | *75 | 2770428 | PULLEY/PINION GEAR ASSEMBLY | 125 | 2055610 | DECAL-COVER, LED |
| ■ | 2889460 | SEAL & ORING KIT INCL. 18, 21, & 22 | *76 | 2058405 | FLANGE-PULLEY (VANTAGE) | 126 | 2051712 | WASHER- .152 ID, .50 OD, .06 |
| 23 | 830-094 | THRU BOLT 12-24 X10.31[2.EA] | *77 | 2053418 | SCREW 4-40 X 1/4 PPH[2.EA] | 127 | 2302100 | SCREW-6-20 X 1/2" THD CUT |
| 24 | 2316271 | MOTOR ASSEMBLY, 4', 24V | 78 | 2050800 | BELT-DRIVE (VANTAGE) | 128 | 2012100 | SCREW-8-18 X 5/8" THD CUT(4REQ'D) |
| 25 | 979-015 | STRAIN RELIEF - BODY | 79 | 2051705 | WASHER-NYLON ID.312 X OD. | 129 | 2050110 | KNOB-POINTER, VANTAGE |
| 26 | 9950339 | CAP - STRAIN RELIEF | 79A | 2051703 | WASHER-THRUST ID.315, OD.562 | 130 | 2051717 | WASHER- #8 SAE FLAT ZNK PLT |
| 27 | 2382900 | GROMMET- STRAIN RELIEF | ■ | 2882200 | GEAR LIFT/PIN KIT INCL.80,62 | 131 | 2332101 | SCREW-8-32 X 1/2" SS |
| 28 | 2331160 | PROPELLER (W.WEDGE 2) MAX 101 | *80 | 2990426 | LIFT GEAR ASSEMBLY | 132 | 2371715 | LOCKWASHER-STAR #8 ZINC |
| 29 | 2093101 | NUT-PROP NYLOC (LARGE) MAX 101 | 81 | 2052620 | PIN-DRIV-LOK 1/8 X 5/8" | 133 | 2056700 | PLUG, POINTER, VANTAGE |
| 30 | 2091701 | WASHER-PROP (LARGE) MAX 101 | 82 | 2056520 | CAP-LOWER, GEAR HOUSING | 134 | 2050220 | SHIELD-EXTRUSION, VANTAGE |
| 31 | 2772010 | TUBE-MOTOR, 1 3/4" KIT W/TEMPLATE | 83 | 2383500 | BOLT-3/8-16 X 1.25 | 135 | 2053414 | SCREW-#8-32 X 1/2" TRI-LOBE[2.EA] |
| 32 | 2991822 | TRANSOM BRACKET ASSEMBLY 36V | 84 | 2053402 | SCREW-10-24 X 1" TRI-LOBE [3.EA] | 136 | 2055611 | DECAL-SHIELD (VANTAGE)[3.EA] |
| 33 | 2056505 | HOUSING EXTRUSION | 85 | 2054600 | O-RING, GEAR HOUSING | 137 | 2998200 | CIRCUIT BRKR ASSEMBLY 36V [2.EA] |
| 34 | 2053511 | BOLT-CARRIAGE 5/16-18 1"[4.EA] | 86 | 2056510 | CAP-UPPER, GEAR HOUSING | 138 | 2051732 | WASHER .315 X .562 |
| 35 | 2151726 | WASHER-5/16 STD (S/S)[4.EA] | 87 | 2057200 | LATCH (VANTAGE) | 139 | 2053420 | SET SCREW #8-32 |
| 36 | 2053103 | NUT, 5/16-18 NYLOC [4.EA] | 88 | 2052711 | SPRING, LATCH RETURN | 140 | 2051710 | LOCKWASHER 3MM |
| 37 | 2770420 | LOWER SUPPORT CAGE ASSEMBLY | 89 | 2050102 | KNOB-LATCH (VANTAGE) | 141 | 2050921 | HANDLE TENSION - LONG |
| 38 | 2057302 | BEARING-UPPER, LIFT SCREW | 90 | 2353401 | SCREW-10-16 X 1/2 STALGD | ■ | 2880910 | HANDLE L/R KIT |
| ■ | 2881510 | YOKE/BEARING RACE KIT INCL.39,40,42 | 91 | 2051716 | WASHER-FENDER #10 | INCL. 100,101,102,142,143,150 | | |
| *39 | 2051510 | YOKE-LIFT SCREW | 92 | 2151730 | WASHER-CUP (HINGE BRACKET) | *142 | 2050916 | HANDLE SIDE L |
| *40 | 2056200 | BEARING RACE-YOKE | 93 | 2051737 | WASHER-3/8 FLAT (ZINC) | *143 | 2050911 | HANDLE SIDE R |
| 41 | 2053401 | SCREW-10 X 1/2,TYPE 25,[2.EA] | 94 | 2053107 | NUT-3/8-16, TOPLOCK | ■ | 2880925 | HANDLE/CLAMP SCREW KIT |
| 42 | 2353401 | SCREW-10-16 X 1/2 STALGD | 96 | 2990921 | HANDLE ASSEMBLY, VANTAGE | INCL. 2 EA OF 144-148 | | |
| 43 | 2053400 | SCREW-LIFT, 1/2-10 ACME | ■ | 2884106 | HANDLE CTRL BOARD/GRIP KIT INCL. 97,149 | *144 | 2051300 | SCREW-CLAMP 5/8X4 |
| 44 | 2052707 | SPRING-COIL,SOFT STOP | *97 | 2994005 | CTRL BOARD ASSEMBLY-HANDLE | *145 | 2050925 | HANDLE-CLAMP SCREW |
| 45 | 2770429 | COIL SPRING/WASHER ASSEMBLY KIT | 98 | 2055115 | BUTTON SWITCH ACTUATOR | *146 | 2052625 | PIN-COILED SPRING |
| 46 | 2053413 | SCREW-10-16X1' TYPE AB,HEX(4REQ'D) | ■ | 2883701 | PLUNGER/GRIP KIT INCL. 99,149 | *147 | 2011710 | WASHER-CLAMP SCREW |
| ■ | 2883200 | WIRE CLAMP KIT INCL. 47,48,49 | *99 | 2053700 | PLUNGER, ON/OFF | *148 | 2263402 | SCREW- 1/4-20X3/4" |
| *47 | 2053200 | WIRE CLAMP, LEFTHAND | 100 | 2050111 | KNOB-SPEED CONTROL | 149 | 2880424 | GRIP KIT |
| *48 | 2053205 | WIRE CLAMP, RIGHTHAND | 101 | 2012100 | SCREW-8-18 X 5/8" THD CUT[2.EA] | *150 | 2053105 | NUT- HEX |
| *49 | 2053417 | SCREW-10-16X3/4 TYPE BT,PPH | 102 | 2053412 | SCREW 8 X 1.5"TYPE 25 PPH[2.EA] | 151 | 2881500 | TUBE/SLEEVE/BUSHING KIT |
| 50 | 2770400 | TAPE SPRING ASSEMBLY INCL. 51-55 | ■ | 2880921 | HANDLE TENSION KNOB KIT | 152 | 2990950 | HANDLE/CTRL BOARD ASSEMBLY |
| 51 | 2052705 | SPRING, CONSTANT FORCE | | | INCL. 103,104,105,141 | 153 | 2262658 | PROP PIN |
| 52 | 2052610 | PIN-PIVOT 7/16" O.D. | *103 | 2051736 | WASHER-URETHN,ID.4 X OD 1 | 154 | 2340610 | CONNECTOR CABLE |
| 53 | 2051920 | BRACKET-SPRING | *104 | 2053115 | NUT-WASHER, HANDLE ASSEMBLY | | | |
| 54 | 2052305 | WIRE GUIDE (VANTAGE) | *105 | 2050015 | RACHET-DISK, HANDLE ASSEMBLY | | | |
| 55 | 2053418 | SCREW-#4-40X1/4 TYPE F,PPH | ■ | 2880920 | BRACKET TENSION HANDLE KIT | | | |
| 56 | 2050225 | WIRE SHIELD | | | INCL. 106,107,150 | | | |
| ■ | 2770405 | TOP PLATE ASSEMBLY INCL.57,60,61,68 | | | | | | |

VANTAGE 80
24 VOLTS
lift system is 12-volts!

