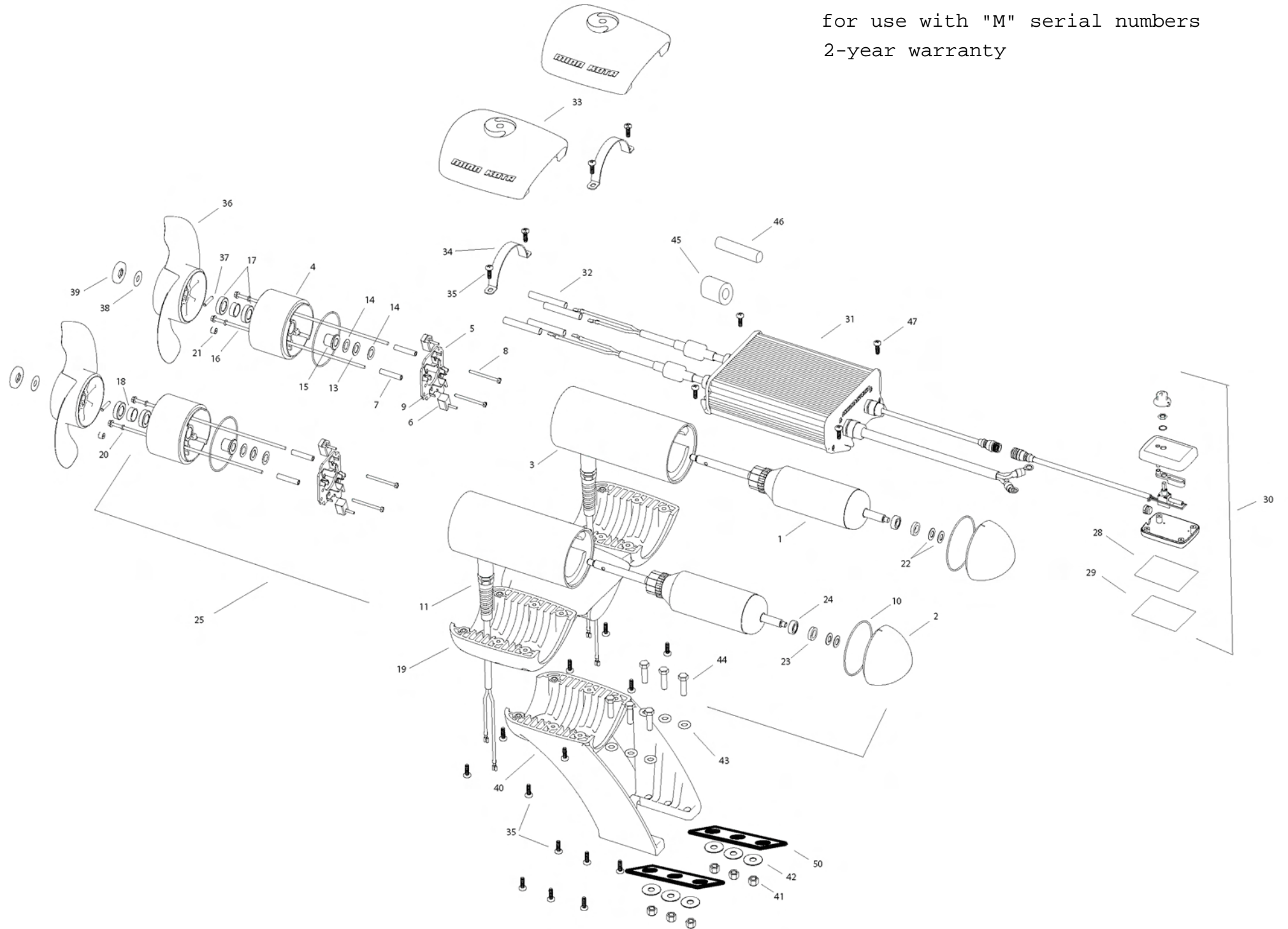


EM Riptide 160  
24 VOLT 116 AMPS

for use with "M" serial numbers  
2-year warranty



1	2-100-234	ARMATURE 24V 4.0 [1 PER MOTOR]
2	421-376	PLAIN END [1 PER MOTOR]
3	2-200-398	CENTER HOUSING ASSEMBLY [1 PER MOTOR]
4	2-300-349	BRUSH END HOUSING (CONTAINS 4,15, 17 (2), 18)
5	2-600-234	BRUSH PLATE ASSEMBLY (CONTAINS 5, 6, 9)
6	188-094	BRUSH [2 PER MOTOR]
7	973-025	SPACER - BRUSH PLATE [2 PER MOTOR]
8	830-027	SCREW #10-32 X 2 SLF THREAD [2 PER MOTOR]
9	975-041	BRUSH SPRING [2 PER MOTOR]
10	701-043	O-RING [2 PER MOTOR]
11	2772917	LEADWIRE ASSEMBLY [1 PER MOTOR]
13	990-051	WASHER STEEL [1 PER MOTOR]
14	990-052	WASHER NYLATRON [1 PER MOTOR]
15	144-017	FLANGE BEARING [1 PER MOTOR]
16	830-094	THRU-BOLT 12-24 X 10.31 [2 PER MOTOR]
17	880-025	SEAL [2 PER MOTOR]
18	725-095	PAPER TUBE [1 PER MOTOR]
19	2381945	BRACKET, DUAL MOUNT
20	701-009	O-RING THRUBOLT [2 PER MOTOR]
21	836-001	ALUMINUM PLUG [1 PER MOTOR]
22	992-010	SPRING WASHER [2 PER MOTOR]
23	990-045	THRUST SPACER [1 PER MOTOR]
24	140-010	BALL BEARING [1 PER MOTOR]
25	2396234	MOTOR ASSY 24V 4.0 80# [2 EA]
28	9950953	VELCRO 1.5 X 2.0 LOOP
29	9950950	VELCRO 1.5 X 2.0 HOOK
30	2990241	HAND CONTROLLER
31	2990238	CONTROL MODULE
32	2385401	SHRINK TUBE [4 EA]
33	2380211	TOP CAP [2 EA]
34	2383810	STRAP, EM [2 EA]
35	2383418	SCREW 1/4-20 SELF TAPPING [18 EA]
■	1378132	PROP KIT [1 PER MOTOR]
36	2331160	PROPELLER [1 PER MOTOR]
37	2262658	DRIVE PIN [1 PER MOTOR]
38	2091701	WASHER, PROP LARGE [1 PER MOTOR]
39	2198401	NUT, PROP [1 PER MOTOR]
40	2381941	LOWER BRACKET (DUAL MOTOR MOUNT)
41	2383122	NUT 3/8-16 NYLOCK [6EA]
42	2381726	WASHER FENDER 3/8 X 1 1/4 OD [3 EA]
43	2381728	WASHER 3/8 [3 EA]
44	2383422	SCREW 3/8 X 1 1/4 [6EA]
45	2307310	FERRITE BEAD [2 EA] (EUROPEAN MOTORS ONLY)
46	2075401	HEATSHRINK [2 EA] (EUROPEAN MOTORS ONLY)
47	2373427	SCREW #12 X 5/8 [4 EA]
50	2385110	INSULATOR PAD, EM
■	2994856	BAG ASSY (CONTAINS 38-41,32,28,29,47,50 & TIE WRAPS) [2 EA]

2889460 SEAL & ORING KIT (1 per motor)

