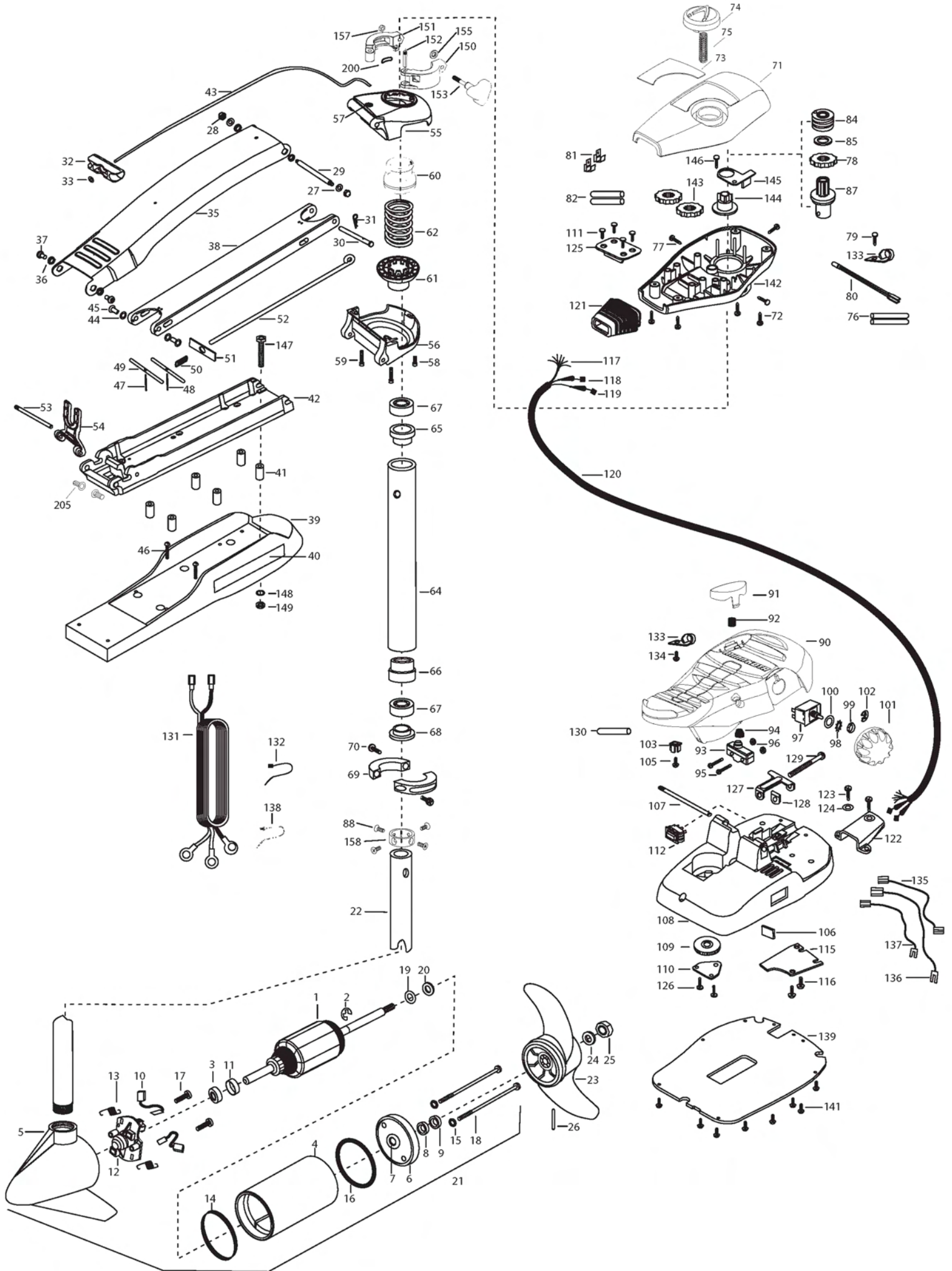


MAX55/SC - 52
 55 lbs Thrust
 12 Volt 50 Amps
 52" SHAFT

for use with "N" serial numbers
 2-year warranty



| | | | | | | | | |
|-----|-----------|--------------------------------------|-----|---------|--------------------------------------|------|---------|-----------------------------------|
| 1 | 2-100-121 | ARMATURE ASSEMBLY 12V 3.625 5SPC 55# | 55 | 2772319 | BRACKET BASE TOP/EYELET ASSEMBLY | 116 | 2332103 | SCREW-6-20 X 3/8 THD SS [2.EA] |
| 2 | 788-015 | RETAINING RING | 56 | 2991771 | BRKT BTTM/BEARING FW ASSEMBLY | 117 | 2261208 | WIRE HARNESS, A/T FT. PHD |
| 3 | 140-010 | BALL BEARING | 57 | 2772352 | EYELET KIT | 118 | 2267505 | CABLE ASSY-RIGHT (5') |
| 4 | 2-200-101 | CENTER HOUSING ASSEMBLY 3.625 FW TXT | 58 | 2263423 | SCREW 5/16-18 X 1" SHCS ZINC | 119 | 2267515 | CABLE ASSY-LEFT (5') |
| 5 | 2-300-196 | BRUSH END HOUSING ASSEMBLY 3.62 SPCO | 59 | 2263425 | SCREW 5/16-18 X 2 1/2" SHCS [2.EA] | 120 | 2265430 | CABLE JACKET (5') |
| 6 | 2-400-101 | PLAIN END HOUSING ASSEMBLY | 60 | 2071541 | SPRING-SLEEVE UPPER | 121 | 2265110 | BOOT-CONTROL BOX |
| 7 | 144-049 | BEARING - FLANGE (SERVICE ONLY) | 61 | 2071535 | SPRING SLEEVE, LOWER | 122 | 2265115 | BOOT-FOOT PEDAL BASE |
| 8 | 880-003 | SEAL | 62 | 2262706 | SPRING, BOWGUARD, NIK PL | 123 | 2372100 | SCREW-8-18 X 5/8 THD SS [2.EA] |
| 9 | 880-006 | SEAL WITH SHIELD | 64 | 2772016 | TUBE W/BEARING RACE ASSEMBLY | 124 | 2261714 | WASHER-MAXXUM FT PDL [2.EA] |
| 10 | 188-036 | BRUSH ASSEMBLY [2.EA] | 65 | 2272067 | TUBE OUTER-24" 4 HOLES | 125 | 2261901 | BRACKET-CONDUIT |
| 11 | 725-050 | BRUSH RETENTION- PAPER TUBE | 66 | 2266260 | BEARING RACE | 126 | 2301310 | SCREW-8-18 X 1/2 SS [2.EA] |
| 12 | 738-036 | BRUSH PLATE W/HOLDER | 67 | 2266220 | BEARING RACE-STEEL | 127 | 2263210 | BRACKET-CONDUIT ADJUSTMEN |
| 13 | 975-040 | SPRING - TORSION [2.EA] | 68 | 2266000 | BEARING BALL-STEEL [2.EA] | 128 | 2263104 | NYLOCK KEEPER |
| 14 | 337-036 | GASKET | 69 | 2266115 | BEARING CONE | 129 | 2263463 | SCREW-1/4-20 X 2" STL PPH |
| 15 | 701-008 | O-RING, THRU-BOLT [2.EA] | 70 | 2771617 | COLLAR HALF-ZINC- 2 PER KIT | 130 | 2355410 | SHRINK TUBE-3/8 OD X 2" |
| 16 | 701-081 | O-RING | 71 | 2263452 | SCREW-1/4-20 X 3/4" SHCS [2.EA] | 131 | 2261225 | LEADWIRE- BATTERY |
| 17 | 830-007 | SCREW-8-32 [2.EA] | 72 | 2280201 | CONTROL BOX COVER | 132 | 2256300 | TIE WRAP-5.5" BLACK |
| 18 | 830-042 | THRU-BOLT 10-32X8.83" [2.EA] | 73 | 2372100 | SCREW-8-18 X 5/8" THD SS [4.EA] | 133 | 2263201 | CLAMP WIRE HARNESS MICRO [2.EA] |
| 19 | 990-067 | WASHER- STEEL THRUST | 74 | 2275601 | DECAL-COVER MAX55/SC | 134 | 2332103 | SCREW-6-20 X 3/8 THDT SS |
| 20 | 990-070 | WASHER - NYLATRON [2.EA] | 75 | 2990140 | DIRECTIONAL INDICATOR | 135 | 2260301 | CONNECTING WIRE (SWITCH) |
| 21 | 2097087 | MOTOR ASSEMBLY 12V 3.625 5SPC FW 55# | 76 | 2282730 | SPRING-INDICATOR | 136 | 2260312 | WIRE,BLK W/WHT STRP 19 1/2 |
| 22 | 2032006 | TUBE (COMP) 4 HOLE- 52" | 77 | 2375400 | SHRINK TUBE-1/4OD X 1-3/4" [2.EA] | 137 | 2260322 | WIRE,BLK W/BLUE STRP-12" |
| 23 | 1378131 | PROP KIT | 78 | 2053414 | SCREW-#8-32 X 1/2" TRI-LOBE [3.EA] | 138 | 2256301 | TIE WRAP-5.5" WHITE |
| 24 | 2091160 | PROPELLER (W.WEDGE 2) | 79 | 2267800 | GEAR-INDICATOR | 139 | 2266414 | BOTTOM PLATE MAX FOOT PED |
| 25 | 2151726 | WASHER-5/16 STD SS | 80 | 2372100 | SCREW-8-18 X 5/8" SS | 141 | 9953104 | SCREW-8 X 1/2" SS [8.EA] |
| 26 | 2053101 | NUT-PROP,NYLOC (MED) 5/16 SS | 81 | 2264015 | LIGHT/INDICATOR | 142 | 2282500 | CONTROL BOX |
| 27 | 2092600 | PIN-DRIVE (95-4HP'S) SS | 82 | 2020713 | TERMINAL-ADAPTOR, MAX [2.EA] | 143 | 2267800 | GEAR-INDICATOR [2.EA] |
| 28 | 9008236 | WASHER 1/4 FLAT ZINC [4.EA] | 83 | 2335400 | SHRINK TUBE-1/2 OD X 2" [2.EA] | 144 | 2262221 | INDICATOR-DRIVE |
| 29 | 2223100 | NUT- TENSION 5/16-18 SS [2 .EA] | 84 | 2355410 | SHRINK TUBE 3/8 OD X 2 | 145 | 2261905 | BRACKET/INDICATOR |
| 30 | 2262605 | PIN- BWGRD UPPER THREADED | 85 | 2232360 | PULLEY-CABLE DRUM | 146 | 2301310 | SCREW-8-18 X 1/2" SS |
| 31 | 2262607 | CLEVIS PIN ZP MAXXUM BWGRD | 86 | 2261730 | WASHER-NYLON A/T CON B | 147 | 2994830 | BAG ASSEMBLY-MAXXUM |
| 32 | 2260805 | SPRING CLIP | 87 | 2996247 | TOP BEARING RACE/ PINION DR | *148 | 2263431 | SCREW 1/4-20 X 3.5" PPH [6.EA] |
| 33 | 2150400 | PULL-GRIP | 88 | 2223468 | SCREW-8-32 X 7/16" ZN PL [4.EA] | *149 | 2261713 | WASHER-1/4 FLAT SS [6.EA] |
| 34 | 2151700 | WASHER-EYE SHAFT(.562 OD) | 89 | 2994496 | FOOT PEDAL/PLUG ASSEMBLY (AT) | 150 | 2263103 | NUT-1/4-20 NYLOCK-JAM SS [6.EA] |
| 35 | 2991841 | MOUNT- BOW ASSEMBLY, W/O BGRD FW LNG | 90 | 2283700 | PUSH-BUTTON FOOT PEDAL | 151 | 2260330 | WIRE EXTENSION- 10GA BLK 9" |
| 36 | 2264246 | ARM-UPPER FW LONG | 91 | 2302732 | SPRING-LOWER PEDAL SS | 152 | 2260331 | WIRE EXTENSION- 10GA RED 9" |
| 37 | 2293501 | BUSHING, STAINLESS STEEL [4.EA] | 92 | 2264020 | SWITCH MOMENTARY | 153 | 2260332 | WIRE EXTENSION- 10GA WHT 9" |
| 38 | 2263500 | BOLT- SHOULDER (MAXXUM) [2.EA] | 93 | 2265140 | BOOT-MICROSWITCH | 154 | 2260333 | WIRE EXTENSION- 10GA YEL 9" |
| 39 | 2994317 | ARM-LOWER ASSEMBLY LONG FW,EXT | 94 | 2262114 | SCREW-MOUNTING/SWITCH [2.EA] | 155 | 2355410 | SHRINK TUBE 3/8 OD X 2 [2.EA] |
| 40 | 2263913 | MOTOR REST LONG MAXXUM | 95 | 2233100 | NUT-SWITCH MOUNT [2.EA] | 156 | 2355410 | SHRINK TUBE 1/4 OD X 1-3/4 [2.EA] |
| 41 | 2265514 | DECAL-MAXXUM,MOTOR REST [2.EA] | 96 | 2264026 | SWITCH-5 SPEED (ALL TERRAIN) | 157 | 2991550 | CLAMP COLLAR ASSEMBLY |
| 42 | 2261505 | SPACER, MOTOR REST [6.EA] | 97 | 2261701 | LOCKWASHER-STAR | 158 | 2071550 | CLAMP COLLAR "A" |
| 43 | 2773986 | BOWPLATE/INST ASSEMBLY STD FW | 98 | 2263105 | NUT-HEX | 159 | 2071555 | CLAMP COLLAR "B" |
| 44 | 2251601 | ROPE (40"), MAXXUM MOUNT | 99 | 2261715 | SPACER-SWITCH 5 SP MODELS | 160 | 2072621 | PIN-KNURLED |
| 45 | 2261708 | WASHER-3/8X1/2X.010" SS [2.EA] | 100 | 2280110 | KNOB-SPEED CONTROL (5 SPD) | 161 | 2281505 | KNOB-CLAMP COLLAR |
| 46 | 2267318 | BEARING NYLINER-[2.EA] | 101 | 2263000 | E-RING TRU-ARC#5133-43 | 162 | 2071718 | WASHER #10 NYLON RETAINING |
| 47 | 2263434 | SCREW, 8-18 X 1" PPH SS [2.EA] | 102 | 2260730 | CONNECTOR 1/4 MALE TAB OD | 163 | 2071716 | WASHER - FLAT SS |
| 48 | 2152610 | SPRING-PIN LOCKBAR [2.EA] | 103 | 2332103 | SCREW-6-20 X 3/8" THD SS | 164 | 2071560 | SPLIT COLLAR |
| 49 | 2233600 | LOCK BAR- BOW MOUNT | 104 | 2266413 | TENSION SCREW PLATE FTPED | 200 | 2075120 | URETHANE PAD |
| 50 | 2233602 | LOCK BAR, REAR - ZINC | 105 | 2260511 | PIN-PIVOT A/T FT PDL | 205 | 2261540 | INSERT-THREADED BOWPLATE (2 EA.) |
| 51 | 2152700 | SPRING-LOCKBAR CAD.PLTD | 106 | 2992102 | FT PED BASE/PIN ASSEMBLY SONAR | | | |
| 52 | 2262703 | SPRING STOP | 107 | 2262301 | PULLEY- FOOT PEDAL | | | |
| 53 | 2153604 | EYE SHAFT-2LOCKBAR LONG -PL | 108 | 2266400 | COVER-PULLEY STAMPING | | | |
| 54 | 2260506 | HINGE-PIN HEADLESS ZINC | 109 | 2223430 | SCREW- #8 X3/4 SS PPH TYPE 25 [4.EA] | | | |
| 55 | 2293811 | YOKE,MAX MNT-POLYPROPYLENE | 110 | 2254031 | SWITCH-M0M/OFF/CON | | | |
| 56 | 2991762 | BOWGUARD ASSEMBLY- FT CTRL FW | 111 | 2266412 | SWITCH PLATE, FT PEDAL | | | |
| 57 | | | 112 | | | | | |
| 58 | | | 113 | | | | | |
| 59 | | | 114 | | | | | |
| 60 | | | 115 | | | | | |
| 61 | | | | | | | | |
| 62 | | | | | | | | |
| 63 | | | | | | | | |
| 64 | | | | | | | | |
| 65 | | | | | | | | |
| 66 | | | | | | | | |
| 67 | | | | | | | | |
| 68 | | | | | | | | |
| 69 | | | | | | | | |
| 70 | | | | | | | | |
| 71 | | | | | | | | |
| 72 | | | | | | | | |
| 73 | | | | | | | | |
| 74 | | | | | | | | |
| 75 | | | | | | | | |
| 76 | | | | | | | | |
| 77 | | | | | | | | |
| 78 | | | | | | | | |
| 79 | | | | | | | | |
| 80 | | | | | | | | |
| 81 | | | | | | | | |
| 82 | | | | | | | | |
| 83 | | | | | | | | |
| 84 | | | | | | | | |
| 85 | | | | | | | | |
| 86 | | | | | | | | |
| 87 | | | | | | | | |
| 88 | | | | | | | | |
| 89 | | | | | | | | |
| 90 | | | | | | | | |
| 91 | | | | | | | | |
| 92 | | | | | | | | |
| 93 | | | | | | | | |
| 94 | | | | | | | | |
| 95 | | | | | | | | |
| 96 | | | | | | | | |
| 97 | | | | | | | | |
| 98 | | | | | | | | |
| 99 | | | | | | | | |
| 100 | | | | | | | | |
| 101 | | | | | | | | |
| 102 | | | | | | | | |
| 103 | | | | | | | | |
| 104 | | | | | | | | |
| 105 | | | | | | | | |
| 106 | | | | | | | | |
| 107 | | | | | | | | |
| 108 | | | | | | | | |
| 109 | | | | | | | | |
| 110 | | | | | | | | |
| 111 | | | | | | | | |
| 112 | | | | | | | | |
| 113 | | | | | | | | |
| 114 | | | | | | | | |
| 115 | | | | | | | | |

2888460 SEAL & ORING KIT

